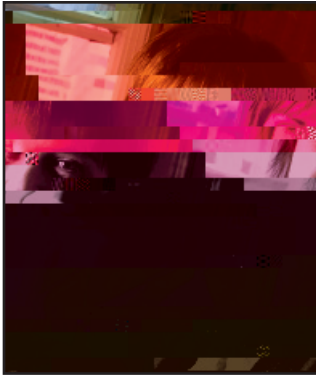


# Principal's Message

2008-09



## Welcome to McGill!

For more than 185 years, McGill has distinguished itself as one of the world's great public universities, renowned for outstanding students, professors and alumni, for achievement in teaching and research, and for its distinctive international character.

As one of the top 12 universities in the world, McGill's defining strengths include its unwavering commitment to excellence, and a willingness to be judged by the highest standards. And by these standards, McGill has excelled far beyond any reasonable expectations. We have produced a disproportionate number of Nobel laureates and Rhodes scholars. Olympians, award-winning authors and musicians, astronauts, medical pioneers and world-famous leaders in all walks of life are counted among our alumni — remarkable individuals who have shaped our society and the course of history itself in profound ways.

As students you are at the core of all that we do. Your time at McGill offers more than an excellent education. It is a critical period of personal and intellectual discovery and growth, and one that will help shape your understanding of the world.

By choosing McGill, you are following in the footsteps of almost 200,000 living McGill alumni across the globe and making a commitment to excellence, as they did. And, while a lot is expected of you, McGill gives you the means to succeed. All of McGill's 21 faculties and professional schools strive to offer the best education possible. By joining the McGill community of scholars, you will experience the University's vibrant learning environment and active and diverse campus life, which support both academic progress and personal development. You will form lasting friendships with people from around the world.

Today's social, technological and medical challenges continue to inspire innovative approaches to research, teaching and learning. New cutting-edge facilities provide you with many state-of-the-art classrooms and laboratories. Likewise, McGill's professors thrive in this environment as they enjoy some of the highest research successes per fulltime professor in Canada, while dedicating themselves as well, to enrich your education with research. Our dedicated administrative and support staff's primary focus is to ensure that you have the necessary resources to respond effectively to academic challenges and to develop lifelong skills.

McGill University has been synonymous with first-class education and research since it was founded in 1821. We remain committed to your success.

A handwritten signature in black ink, appearing to read "Heather Munroe-Blum". The signature is written in a cursive style and is positioned above a horizontal line.

**Professor Heather Munroe-Blum**  
Principal and Vice-Chancellor





---

## Table of Contents

Dean's Welcome, page 4

1 Graduate and Postdoctoral Studies Office, Fellowships and Awards, page 5

1.1 Location, page 5

1.2 Administrative Officers, page 5

2 Graduate Student Financial Support, page 5

2.1 Information for International Students and Fellows, page 5

2.2 Further Information, page 6

3 External Fellowships, page 6

3.1 Federal Fellowships for Canadian Students and Postdocs, page 6

3.2 Provincial Fellowships for Quebecincial84p TJ0 -1.2444 TD-.0009 Tc.0045 Tw[(4.3)-837.3(C)2.7(omplementary McGill )7.4(Awa)7.1(r)]TJ1



---

# **1 Graduate and Postdoctoral Studies Office, Fellowships and Awards**

---

## **1.1 Location**

tions from the International Tuition Supplement" to determine if you are eligible for this program.

There are a number of funding programs aimed specifically at international students embarking on study in Canada. These

Doctoral and postdoctoral competitions are by direct application to the agency. Master's competitions involve a pre-selection by the university where the student was registered in the term of application. Deadlines are normally in October and February (not all competitions allow for February applications).

**Agency information:** [www.cihr-irsc.ca](http://www.cihr-irsc.ca) under *Funding Opportunities*

**McGill pre-selection information:** [www.mcgill.ca/gps/fellowships](http://www.mcgill.ca/gps/fellowships)

---

### **3.2 Provincial Fellowships for Quebec Students and Postdocs**

Graduate and postdoctoral fellowships from the Quebec Government granting agencies are normally open only to Canadian Citizens or permanent residents of Canada who are Quebec residents for research-based studies at the Master's, doctoral and postdoctoral levels. Exceptions on funding for international students will be covered in [section 3.5, "External Fellowships for International Students and Postdocs"](#). Competition rules and regulations are updated annually and available on the agency Websites.

Deadlines are normally in the October of the year prior to the academic year for which funding is requested. Applications are online, with supporting documents sent directly to the agency. Students and postdocs may only apply to one Quebec agency per competition; students in disciplines that border the mandate of

of McGill University and NSERC is available from the GPSO Fellowships and Awards Website [www.mcgill.ca/gps/documents/nup](http://www.mcgill.ca/gps/documents/nup). The signing authority for the University will rest with the GPSO. Further information available from the GPSO Fellowships and Awards Section or directly from the Scholarships and Fellowships Division, NSERC, 350 Albert Street, Ottawa, Ontario K1A 1H5.

Tel: (613) 995-9169

E-mail: [schol@nserc.ca](mailto:schol@nserc.ca)

Website: [www.nserc.ca/sf\\_e.asp?nav=sfnaw&lbi=2c#MITACS](http://www.nserc.ca/sf_e.asp?nav=sfnaw&lbi=2c#MITACS)

#### **WORLD METEOROLOGICAL ORGANIZATION (WMO)**

**Eligibility:** Open to applicants from developing countries, nominated by their governments, for studies or training in meteorology and operational hydrology at universities or meteorological training institutes in countries where facilities are available.

**Value:** Normally based on United Nations Development Programme stipend rates.

**Application:** Submitted by Government of candidate's country through the Director of the Meteorological/Hydrological Service, 41, avenue Giuseppe-Motta, 1211 Geneva 20, Switzerland, or the local United Nations Development Programme office.

---

### **3.5 External Fellowships for International Students and Postdocs**

International students and postdoctoral trainees should verify with their country's educational authorities for funding opportunities to study abroad. In addition, various sources offer funding opportunities to study in Canada

#### **PBEEE - PROGRAMMES DE BOURSES D'EXCELLENCE POUR ÉTUDIANTS ÉTRANGERS**

*Merit Fellowships for International Students*

**Eligibility:** The program, funded by the Quebec Ministry of Education, Leisure and Sports (MELS) and administered by FQRNT, is open to foreign doctoral students and postdoctoral trainees in all disciplines who are not Canadian citizens or permanent residents of Canada. Students must start in the program for which they receive funding between May and January. Doctoral candidates already in a Quebec university (e.g., already at McGill) are eligible to apply. For postdoctoral trainees and short visits, the students may not already be in the program. Due to the small number of nominations allowed per university, the GPSO will only consider applicants who have an overall First Class academic record (equivalent to 3.7/4.0 and up).

**Value:**

V1 (Doctoral): \$25,000 per year for three years + differential fee waiver for entire studies + Quebec medicare coverage.

V2 (Postdoctoral): \$35,000 per year for one year, non renewable

V3 (Short Visits): \$3,000 per month for up to 4 months

**Deadline:** July: Students, with the help of their supervisors, must submit the McGill pre-selection form. If nominated by the university (each Quebec university can nominate four candidates per category TD-.0002 Tc-.w[-13.l(fun.5 510.66 234 -Tn.5 5-.0003 Tc.)]053 Tw{( sch(Short )-7.5(Vi)6lection .4(Cana5ill pre-14.6074-1(p)]TJ5 TD-.0037 Tc-.0



Woodrow Wilson International Centre for Scholars -  
[www.wilsoncenter.org](http://www.wilsoncenter.org)

#### LIST OF SCIENCE AND ENGINEERING ASSOCIATIONS AND FOUNDATIONS

Amelia Earhart Fellowship Awards for Women - [www.zonta.org](http://www.zonta.org)

---

## 4 McGill Graduate Fellowships

---

### 4.1 Recruitment Fellowships

#### 4.1.1 Richard H. Tomlinson Fellowships

Established in 2000 through a very generous gift from Dr. Richard H. Tomlinson (Ph.D. 1948). Awarded annually by the Graduate and Postdoctoral Studies Office to recruit outstanding students into Master's and Doctoral degree program. Tomlinson fellows who accept a fellowship from an agency external to McGill will be entitled to one-half the full value of the Tomlinson Fellowship.

#### **TOMLINSON MASTER'S FELLOWSHIPS IN THE FACULTY OF SCIENCE**

**Eligibility:** The Tomlinson Faculty of Science Master's Fellowships are for new students accepted into a Master's program in a department within the Faculty of Science.

**Value:** \$15,000, renewable annually based on satisfactory progress, to a maximum tenure of 2 years for master's level.

**Deadline:** Varies by department.

**Application:** Tomlinson fellowship award holders are selected on the basis of nominations made by departments. Applicants for a Tomlinson fellowship to support a Master's or Doctoral program at McGill must submit their application directly to departments by early January, along with their application for admission.  
[www.mcgill.ca/gps](http://www.mcgill.ca/gps).

#### **TOMLINSON DOCTORAL FELLOWSHIPS**

**Eligibility:** The Tomlinson Doctoral Fellowships are for new students accepted into a doctoral degree at any department at McGill University.

**Value:** \$25,000, renewable annually based on satisfactory progress, to a maximum tenure of 3 years for doctoral level.

**Deadline:** Varies by department.

**Application:** Tomlinson fellowship award holders are selected on the basis of nominations made by departments. Applicants for Tomlinson fellowship to support a Master's or Doctoral program at McGill must submit their application directly to departments by early January, along with their application for admission.  
[www.mcgill.ca/gps](http://www.mcgill.ca/gps).

---

universities, particularly Technische Universität Berlin. Students in Chemical and Civil Engineering are not eligible.

**Value:** \$25,000; renewable once at the Master's level and twice at the Doctoral level.

**Deadline:** February (Confirm precise deadline on GPSO Website).

**Application:** Forms and additional information are available from the GPSO Fellowships and Awards Website at: [www.mcgill.ca/gps/fellowships](http://www.mcgill.ca/gps/fellowships).

#### **DALBIR BINDRA FELLOWSHIP**

Established in recognition of the late Professor Dalbir Bindra's contribution to teaching and research during his thirty years in the Department of Psychology at McGill.

**Eligibility:** Open to students registered in any program of the Graduate Studies, with a preference to those from developing

---

## **4.2 McGill Major Fellowships**

**This program is under review. Please visit [www.mcgill.ca/gps/fellowships](http://www.mcgill.ca/gps/fellowships) for the most current information.**

McGill Majors are awarded on the basis of nominations by departments.

### **Description of Individual Major Fellowships**

#### **ALMA MATER FELLOWSHIP**

Established in 1982 by generous contributions to the Alma Mater Fund from many graduates who designated their gifts to the area of scholarships and student aid.

**Eligibility:** Open to students in any degree program in the Graduate Studies. No citizenship restrictions.

**Value:** \$10,000; renewable once.

#### **ARTHUR C. TAGGE FELLOWSHIP IN THE HUMANITIES AND SOCIAL SCIENCES**

**Eligibility:** Tenable by a graduate of any approved university proceeding to a higher degree in any department in the Humanities or the Social Sciences. No citizenship restrictions.

**Value:** \$10,000, non-renewable. Awarded for one year only.

#### **CARL REINHARDT FELLOWSHIP**

Established from the estate of the late Carl Reinhardt, who received Bachelor of Applied Science degrees from McGill University in Civil Engineering (1896) and Mining Engineering (1897).

**Eligibility:** Open to graduate students in the Departments of Physics, as well as Earth and Planetary Sciences. No citizenship restrictions.

**Value:** \$10,000; renewable twice.

#### **CHALK- ROWLES FELLOWSHIP**

Established by Mary Laura Chalk, McGill's first woman Ph.D. in Physics (1928), in memory of her husband, William Rowles (Ph.D. 1928), Professor Emeritus of Agricultural Physics at Macdonald College.

**Eligibility:** Open to graduate students in the Department of Physics. No citizenship restrictions.

**Value:** \$10,000; renewable once.

#### **CLIFFORD C.F. WONG FELLOWSHIP**

**Eligibility:** Founded in 1981 by Mr. Clifford C.F. Wong, B. Arch. 1960, to enable a graduate student to pursue studies towards a higher degree at McGill University. First preference will be given to students coming from the People's Republic of China and second preference to students coming from Hong Kong. In the absence of suitable candidates from these two regions, the fellowship would be available to suitable candidates from any country.

**Value:** \$12,000 plus tuition fees at the non-privatized rate; renewable once.



**Eligibility:** Awards will be made for graduate studies at McGill in appropriate areas of Arctic studies, including but not necessarily limited to environmental problems within the Arctic regions, Arctic archaeology and prehistory, social problems of the Arctic (development, impact assessment studies, psychology, rural education, etc.), Arctic health and medicine, communications, indigenous Native Peoples (rights, languages and traditional culture), Humanities and Social sciences and Natural Sciences.

**Value:** \$6,000. Awards are renewable for a second year for Masters studies and up to a fourth year for Doctoral Studies.

**Deadline:** To the department in which the applicant intends to study, by March 1.

**Application:** Application information is available from the GPSO Fellowships and Awards Website at:  
[www.mcgill.ca/gps/fellowships](http://www.mcgill.ca/gps/fellowships).

#### **JOHN WILLIAMSON FREDERICK PEACOCK MEMORIAL SCHOLARSHIP**

Established in memory of Flight Lieutenant John Williamson Frederick Peacock, a member of the Delta Upsilon Fraternity, who was killed in action over Normandy in 1944.

**Eligibility:** Open to students who have received an undergraduate degree from McGill University in any faculty and tenable for graduate study at any recognized university. The necessary CGPA is 3.5 or above.

**Value:** Average of \$5,000 (awards of lesser value may be made).

**Deadline:** February 1.

**Application:** Forms and additional information are available from the GPSO Fellowships and Awards Website at: [www.mcgill.ca/gps/fellowships](http://www.mcgill.ca/gps/fellowships). (Same form as Mackenzie King Open and Travelling Scholarships).

#### **THOMAS AND WILLA FERGUSON SMYTHE FELLOWSHIP**

**Eligibility:** Founded by a bequest of the late Thomas Harold Smythe for students in any discipline from Botswana, Lesotho, Malawi, Namibia, South Africa, Swaziland, Zambia or Zimbabwe who intend to return to their countries upon completion of their studies in Canada. A strong preference is given to incoming students. Candidates must have been formally granted admission to a McGill graduate program at the time of nomination.

**Value:** Minimum of \$7,000 plus tuition fees at the non privatized rate; renewable once.

**Deadline:** March 30 by McGill department.

**Application:** There is no application form, since this fellowship is based on department nominations.

---

### **4.5 Dissertation Fellowships**

#### **ROBERT AND MARY STANFIELD DISSERTATION FELLOWSHIP**

applicable regulations, registers on a full time basis at least for the fall and winter trimesters and pays the tuition fees on the prescribed registration dates.

All French citizens and a limited number of citizens of a country in the list which can be found at [www.mels.gouv.qc.ca/ens-sup/ens-univ/droits\\_scolaire-A\\_pays-organisations.pdf](http://www.mels.gouv.qc.ca/ens-sup/ens-univ/droits_scolaire-A_pays-organisations.pdf) are eligible for such exemptions.

To apply for an exemption of this type, a student must meet the following conditions: be a citizen of one of the aforementioned countries or governments; be admitted to a program of studies at a post-secondary institution in Québec; be registered on a full-time basis according to the applicable rules at that institution; like any

**Application:**

Teaching and Learning Services  
Suite MS-12, McLennan Library Building  
3459 McTavish Street  
Montreal, Quebec H3A 1Y1  
Tel.: 514-398-6648  
Fax: 514-398-8465  
E-mail: [tls@mcgill.ca](mailto:tls@mcgill.ca)

**CANADIAN CHINESE CULTURAL SOCIETY OF MONTREAL  
INC. SCHOLARSHIP**

**Eligibility:** Founded in 1969, the Canadian Chinese Cultural Society of Montreal Inc. offers an annual scholarship to an undergraduate or graduate student majoring in Chinese Studies. Candidates must be Canadian citizens able to demonstrate financial need and registered as full time students in the third or fourth year of undergraduate studies or in a graduate program.

**Value:** \$1,000.

**Deadline:** April 30.

**Application:** Applications must be sent to the Scholarship Committee of the Society each year in order to be eligible for consideration for the award for the following academic year. The address is: Canadian Chinese Cultural Society of Montreal Inc.,



the Blackfoot, the Mohawk and the Ojibway bestowed upon Joy Maclaren the honorary name "New Sun".

**Eligibility:** Preference will be given to Canadian Aboriginal and Inuit students, studying nutrition, dietetics, agriculture or environmental sciences on the Macdonald Campus. Community involvement and/or leadership through extracurricular activities is encouraged.

**Value:** \$10,000. May be renewed for a maximum of two years subject to satisfactory standing and full-time status.

**Application:** Awarded by the Faculty of Agricultural and Environmental Sciences Scholarships Committee, after department invitation of candidates to apply.

#### **ROTARY CLUB OF MONTREAL INTERNATIONAL AGRICULTURAL AWARD**

Established by the Rotary Club of Montreal in 1997 to provide opportunity for international students in agriculture to study at McGill.

**Eligibility:** Awarded to an international student for graduate level studies at the Macdonald Campus in the area of agriculture and food production. Preference will be given to entering students from Asia, Africa or the Caribbean, who require additional financial assistance and who intend to return to their home country to train others.

**Value:** \$5,000. Renewable for one year in the M.Sc. program and two years in the Ph.D. program.

**Application:** By departmental recommendation to the Faculty of Agricultural and Environmental Sciences Scholarships Committee.

#### **WALTER M. STEWART POST**





**MCCALL MACBAIN FELLOWS**

Established in 2007 through a generous gift from John McCall MacBain, B.A. 1980 and Marcy McCall MacBain. Awarded by the Graduate and Postdoctoral Studies Office on the recommendation



**THE FOUNDATION FOR THE ADVANCEMENT OF  
PROTESTANT EDUCATION GRADUATE FELLOWSHIP IN  
HISTORY**

Established in 2002 by The Foundation for the Advancement of Protestant Education for an outstanding graduate student in the Department of History.

**Eligibility:** Awarded by the Department of History to graduate students in History on the basis of academic excellence and outstanding research potential. Preference shall be given to students researching the history of Protestant education in the province of Quebec.

**Value:** Minimum \$7,500.

### 5.3.15 Philosophy

---

#### **DAVID FATE NORTON AND MARY J. NORTON FELLOWSHIP IN PHILOSOPHY**

**Eligibility:** Established in 2001 by David Fate Norton and Mary J. Norton to assist a graduate student working full-time on a Ph.D. thesis in Philosophy. Awarded on the basis of academic merit by

### 5.3.18 Social Work

---

#### ENTRANCE FELLOWSHIPS:

#### ESTHER KERRY AWARDS

Established by the Alumni Committee of the School of Social Work to honour Esther Kerry, a valuable member of the Committee for many years.

**Eligibility:** Awarded to students who wish to pursue graduate studies in Social Work.

**Value:** Varies.







**JEAN BROWN SCHOLARSHIP**

From a bequest of the late Jean Brown (B.L.S. 1957, M.L.S. 1972).

**Eligibility:** Awarded to an M.L.I.S. student on the basis of academic merit and financial need.

**Value:** \$900.

**LE PRIX BIBLIOTHÈQUE NATIONALE DU QUÉBEC - CHARLES H. GOULD**

**Eligibility:** Created in 2001 for McGill students enrolled in the M.L.I.S program. It is awarded to a full-time student to foster research and training, and to encourage the pursuit of excellence. The jury of Le Prix BNQ comprises a representative of the BNQ, a professor and the Director of the School of Information Studies or a designated representative. Final selection is based on the academic record of the candidate as well as the quality of the candidate's written expression in French or English on a topic chosen by the BNQ.

**Value:** \$5,000

**MARGARET DOWNEY PRIZE**

Established in 1999 by a bequest from Margaret A. Downey, B.L.S. (1941).

**Eligibility:** Awarded on the basis of academic merit to an M.L.I.S. student by the School of Information Studies.

**Value:** Minimum \$500.

**MARGERY TRENHOLME FELLOWSHIP**

Established in 2002 through a bequest from Margery W. Trenholme, B.A. 1935, B.L.S. 1946.

**Eligibility:** Awarded by the School of Information Studies to a graduate student who will be enrolled in one of its programs.

**Value:** Minimum \$6,500.

**MARGERY TRENHOLME MEMORIAL AWARD IN LIBRARY STUDIES**

Established in 2001 through a bequest from Margery Trenholme,



**ALVARO ORTEGA AWARD**

Established in memory of Alvaro Ortega by his wife, Madeleine Ortega and colleagues. Prof. Ortega was a graduate of the McGill School of Architecture and established the School's graduate program in Minimum Cost Housing, where he taught for many years.

**Eligibility:** Awarded annually by the School of Architecture to a graduate student who is in financial need and good academic standing and whose research is in the area of low cost housing.  
**Value:** \$500.

**AMERICAN INSTITUTE OF ARCHITECTS HENRY ADAMS MEDAL AND CERTIFICATES OF MERIT**

Established in 1986 and awarded for general excellence to graduating students in the professional program of architecture schools recognized by the Institute. The medal and certificate are awarded by the School of Architecture to the top ranking student, and a second certificate to the second ranking graduating student.

**ARCOP/ALCAN AWARD**

Awarded annually to a student in the final semester of the M.Arch.1 program for a design project demonstrating particular sensitivity to the architectural and cultural traditions of its location. The winner will be selected by a jury of three members, at least one of whom is a professional architect who is not a member of the staff of the School of Architecture.

**Value:** \$1,000.

**CLIFFORD C.F. WONG FELLOWSHIP IN ARCHITECTURE**

**Eligibility:** Established in 1987 by Clifford Wong (B.Arch. 1960), this prestigious award is open to students entering the graduate program in Architecture. According to the terms of the bequest, preference will be given to applicants from the People's Republic of China. Only in the event that there are no qualified applicants from China will the Fellowship be offered to a candidate from another country.

**Value:** A total fund of \$12,000 is available annually, from which award(s) are made at the discretion of the School of Architecture Graduate Fellowships Committee.

**DR. SOO KIM LAN PRIZE IN ARCHITECTURE**

Established in 2000 by Arthur C.F. Lau (B.Arch. 1962) and Crystal S.C. Soo Lau (B.Sc. 1962, M.Sc. 1964) in memory of the latter's mother, Dr. Soo Kim Lan. The prize is awarded by a committee of staff of the School of Architecture to an outstanding student completing the second semester of study in the Master of Architecture program.

**Value:** \$2,000.

**FRED LEBENSOLD MEMORIAL FELLOWSHIP IN ARCHITECTURE**

**Eligibility:** Established in 1987 by Mrs. Ruth Lebensold and Family in memory of Fred Lebensold, distinguished Montreal architect and Professor in the McGill School of Architecture from 1952-1955. Awarded annually by the School of Architecture Graduate Fellowship Committee, on the basis of academic merit, to a student entering the Master of Architecture Program.

**Value:** \$3,500.

**H.L. FETHERSTONHAUGH BOOK PRIZE**

Established in memory of the late H.L. Fetherstonhaugh, M.C., F.R.A.I.C., F.R.I.B.A., R.C.A., a former member of staff in the School of Architecture. Awarded by the School of Architecture to the student with the highest standing in the course Professional Practice 1.

**HUGH MACLENNAN MEMORIAL SCHOLARSHIP**

Established by the Hon. John Stewart MacLennan, Dr. Francis MacLennan and Miss Isabella MacLennan in memory of Hugh MacLennan, son of the Hon. John Stewart MacLennan, killed at the Battle Ypres in 1915. Awarded for travel to the student who has

maintained the highest standing throughout professional studies in Architecture. Selection is made by a Committee of Staff of the School of Architecture.

**Value:** \$4,500.

**JOHN BLAND SCHOLARSHIP IN ARCHITECTURE**

Established in 1998 by a generous gift from a McGill graduate of Chemical Engineering (Class of 1959), from Hong Kong, in honour of Professor John Bland, Director of the School of Architecture between 1941 and 1972. Awarded by a committee of staff of the School of Architecture to a graduating student to support work in China.

**Estimated value:** \$5,000.

**LOUIS B. MAGIL SCHOLARSHIP IN AFFORDABLE HOMES**

Established in 1989 by the 4.2(he)-6, in 001 Tmy(agilT\*6.3(l)1.3(T5Tc-.002







**Eligibility:** Polish citizen under 40 years of age; Degree equivalent to a Canadian Bachelors degree, record of high academic achievement; TOEFL of 600; 2 years work experience, a written essay on career goals and expectations. Successful candidates must plan to return to Poland and participate in its economic life.

**Value:** \$27,000

**ROGER C. BENNETT PRIZE IN MARKETING**

Established in 1999 with the support of friends and family of the late Roger C. Bennett, distinguished Professor of Marketing (Desautels Faculty of Management), who had a zest for life.

**Eligibility:** Awarded by the Desautels Faculty of Management Scholarships Committee to a graduating M.B.A. student who has demonstrated academic achievement and community involvement.

**Value:** Minimum \$1,250.

**SHEILA WELLINGTON BMO FINANCIAL GROUP AWARD**

Established by the Bank of Montreal in 1996 for students in the Faculty of Management.

**Eligibility:** Awarded by the Desautels Faculty of Management Scholarships Committee on the basis of high academic standing, leadership skills and community involvement to full-time students continuing in the M.B.A. or B.Com. program. Preference is given to female students in programs related to finance and/or economics.

**Value:** \$6,000 for graduate students and \$2,000 for undergraduates.

**Application:** Eligible students wishing to be considered for this award should submit a CV and appropriate documentation sup-





**ELAINE BÉLANGER GRADUATE STUDENTSHIP IN MEDICAL RESEARCH**

Established in 2003 by a bequest from Elaine Bélanger for a graduate student pursuing medical research. Awarded by the Faculty of Medicine's Postgraduate Awards Committee.

**Value:** Minimum \$6,500.

**ELIZABETH STEFFEN MEMORIAL AWARD**

**Eligibility:** Established in 1995 by a bequest of the late Elizabeth Steffen (M.D. 1945) and awarded by the Faculty of Medicine to contribute to the support of a full-time graduate student pursuing research in the Faculty of Medicine.

**ESTHER CUSHING FELLOWSHIP**

**Eligibility:** Established in 1992 for a student working towards a Master's or doctoral degree in the Faculty of Medicine.

**F.S.B. MILLER MEMORIAL FUND**

**Eligibility:** Established in 1982 to provide support for Genetic and Viral research in Neurobiology.

**GEORGE G. HARRIS FELLOWSHIP IN CANCER**

**Eligibility:** Established in 1962 by a bequest of George G. Harris to provide a fellowship in Cancer Research.

**GERSHMAN MEMORIAL SCHOLARSHIP FUND**

**Eligibility:** Established in 1965 to record the bequest of funds from the Estate of Fannie Gershman as a memorial to her late husband Mr. Icko Gershman and herself. The income from this endowment is to be used for scholarships in the field of cancer research.

**GORDON PHILLIPS FUND FOR RESEARCH IN CARDIOVASCULAR DISEASES**

**Eligibility:** This fund provides a scholarship open to graduate students involved in cardiovascular research.

**G. RUTHERFORD CAVERHILL FELLOWSHIP**

**Eligibility:** Established in 1943 by Mrs. Rutherford Caverhill for full-time graduate study and training in the Department of Medicine.

**HARRISON WATSON SCHOLARSHIP**

**Eligibility:** Established in 1953 by a bequest from the late Harrison Watson and Ruth Appleton Watson in memory of their only son, Captain Aubrey Wentworth Harrison Watson, D.S.O., M.C. The purpose of the scholarship is to encourage research into the causes and cures of tuberculosis and other diseases of an allied character.

meeting in the field of plastic surgery or for special support of a resident doing research in plastic surgery. The Prize will be awarded by the Program Director of the Plastic Surgery Training Program in consultation with the Associate Dean of Post-graduate Medical Education.

**Value:** \$4,000.

**DR. EZRA LOZINSKI PRIZE IN CLINICAL MEDICINE**

Established in 1989 in memory of Mrs. Deitcher's father, Dr. Ezra Lozinski, M.D.,C.M. 1920 and M.Sc. 1923. The prize shall be awarded annually to a medical resident who is training in one of the McGill University teaching hospitals, and who demonstrates outstanding qualities of compassion, understanding, and acceptance of responsibility for ongoing care. Nominations will be submitted before May 1st of each academic year by clinical departments and the winner will be selected by the Faculty of Medicine Postgraduate Committee.

**Value:** \$1,000.

**DR. MILTON C. AND NINA E. WILSON AWARD**

Established in 1970 by a bequest from the late Milton C. Wilson. The annual income provides support for Undergraduate or Post-graduate students in the Faculty of Medicine who are in Financial need.

**DR. PREMYSL "MIKE" PELNAR ACADEMIC ENRICHMENT AWARD**

Established through a generous anonymous donation honouring Dr. Premysl Pelnar, a renowned occupational health physician.

**Eligibility:** Awarded to graduate students of the Department of Occupational Health to further their training and professional activities in the field of occupational health. Awarded by the Chair of the Department upon consultation with the Faculty.

**Value:** \$300 - \$600 per year.

**5.9.4 Research Institute Awards**

---

**5.9.4.1 Cancer Centre**

**DEFI CORPORATIF CANDEREL STUDENTSHIP AND FELLOWSHIP**

**Eligibility:** Open to Ph.D. and post-doctoral fellow candidates within their first year of working with staff of the McGill Cancer Centre and/or the Division of Research, Department of Oncology at McGill.

**Application:** Candidates must submit a C.V. with publications, letters of reference and an outline of their proposed project with investigator's name to: Dr. Michael L. Tremblay, McGill Cancer Center, 3655 Promenade Sir William Osler, Montreal, Quebec H3G 1Y6.

**Value:** \$10,000 Studentships – \$15,000 Fellowships. One year support in both cases.

**ROLANDE AND MARCEL GOSSELIN GRADUATE STUDENTSHIPS**

**Eligibility:** Established in 2003 by a bequest from Rolande Dubreuil Gosselin. Awarded by the Faculty of Medicine's Post-graduate Awards Committee to two Ph.D. students undertaking cancer research under the direction of a member of the McGill Cancer Centre.

**AWARD**



#### **ORDER OF NURSES OF QUEBEC BURSARIES**

**Value:** Eight bursaries of \$10,000 are awarded each year to nurses for studies leading to a Master's degree or to a doctorate degree in nursing.

**Deadline:** March 15.

**Application:** To the Ordre des infirmières et infirmiers du Québec, Secretary of the Committee on Bursaries, 4200 Dorchester Blvd West, Westmount, Quebec, H3Z 1V4.

#### **ROYAL VICTORIA HOSPITAL SCHOOL OF NURSING ALUMNAE ASSOCIATION BURSARY**

Bursaries are available for graduates of the Royal Victoria Hospital, School of Nursing, who have been accepted into an approved University program.

**Application:** For further information apply to the Alumnae Office, Nurses' Home, Royal Victoria Hospital, 687 Pine Avenue West, Montreal, Quebec, H3A 1A1.

#### **ST. JOHN AMBULANCE (ORDER OF ST. JOHN) OF CANADA BURSARIES**

**Eligibility:** Available to experienced registered nurses preparing for leadership positions. Preference will be given to qualified applicants who are volunteers with St. John Ambulance.

**Estimated Value:** One bursary of \$1,000 from the Margaret MacLaren Memorial Fund for studies at the Master's level.

**Deadline:** February 15.

**Application:** Apply to the Chair of Bursary Funds, St. John Ambulance, National Headquarters, 312 Laurier Avenue East, Ottawa, Ontario, K1N 6P6.

#### **W.K. KELLOGG FOUNDATION LOAN FUND**

**Estimated Value:** This fund was established to assist students who have unexpected expenses while registered in courses at the School of Nursing.

**Application:** Consult the Director, Student Aid Office, Brown Student Services Building, 3600 McTavish Street, Montreal, Quebec, H3A 1Y2.

#### **5.9.5.8 Ophthalmology**

##### **PERCY HERMANT FELLOWSHIPS IN OPHTHALMOLOGY**

This fellowship, established by Mr. Percy Hermant, is divided among the first-year residents in ophthalmology.

**Eligibility:** Candidates must be graduates of Medicine at McGill or other approved medical schools, must be commencing the study of Ophthalmology at McGill and must be planning to practice this

**BARBARA ROSENTHAL PRIZE**

Established in 1992 as a tribute to Barbara Rosenthal's long-standing affiliation with the School of Physical and Occupational Therapy and her devoted years of service to the practice of occupational therapy.

**Eligibility:** Awarded to a full-time student in the Master's program in Rehabilitation Science with preference being given to an occupational therapist. The prize will be given by the School of Physical and Occupational Therapy on the basis of high academic standing during the first year of the program.

**Value:** \$225.

**BOURSE DE RECHERCHE ANNE LANG ETIENNE**

Offered to occupational therapists pursuing a Master's or Ph.D. degree who are full members of the Ordre des ergothérapeutes du Québec (OPEQ).

**Value:** \$1,000 for Ph.D.; \$750 for Masters

**Application:** November 1-December 1. For further information contact the Ordre des ergothérapeutes du Québec, 2021 Union Street, Suite 920, Montreal, H3A 2S9, Tel: (514) 844-5778, Fax: (514) 844-0478, E-mail: [ergo@oeq.org](mailto:ergo@oeq.org), Website: [www.oeq.org](http://www.oeq.org).

**BOURSE DE RECHERCHE EN MILIEU CLINIQUE ET BOURSE D'ÉTUDES SUPÉRIEURES**

**Eligibility:** Offered to physiotherapists and also those registered in the Master's program.

**Deadline:** September 30.

**Value:** \$2,000 (Graduate Studies) and \$1,500 (Research).

**Application:**



**JULIUS SCHLOSS MEMORIAL AWARD**

Established by Mr. and Mrs. Oscar Schloss in memory of their brother, the composer Julius Schloss (1902-1972), one of the foremost pupils of Alban Berg in Vienna during the late 1920s and early 1930s whose collected works were donated by the family to the McGill Faculty of Music.

**Eligibility:** This award is to be made to a graduate student in Music on the recommendation of the Graduate Committee of the Schulich School of Music.

**Value:** Approximately \$1,200.

**LEWIS LUTTER BURSARY**

Established in 1988 by the Guttman family in honour of Mr. Lewis Lutter, a loyal and devoted associate of many years of Progress Brand Clothes, Inc. Awarded by the Schulich School of Music to assist a talented student in the School who is in financial need.

**Value:** Approximately \$900.

**LLOYD CARR-HARRIS STRING SCHOLARSHIP**

Established in 1999 through a generous gift from the Lloyd Carr-Harris Foundation.

**Eligibility:** Awarded by the Schulich School of Music Scholarships Committee on the recommendation of the String Area to exceptionally gifted string players entering an undergraduate or graduate program in Performance.

**Value:** \$10,000; renewable twice.

**LUBKA KOLESSA PIANO AWARD**

Established in 2003 by friends and former students in honour of Lubka Kolessa, a legendary concert pianist and McGill Faculty of Music professor from 1960-1971.

**Eligibility:** Awarded to an outstanding piano student by the Schulich School of Music Scholarships Committee.

**Value:** Minimum \$600.

**MARGARET HOULDING MEMORIAL PRIZE**

Established in 1984 by the friends of the late Margaret Houlding.

**Eligibility:** Awarded to a student in the Schulich School of Music.

**Value:** Approximately \$700.

**MARIANNA EATON SCHOLARSHIP**

Established by a bequest from the late Marianna Eaton (née Marianna Soulé Van Doren).

**Eligibility:** Awarded to a graduate student in the Schulich School of Music.

**Value:** Approximately \$2,000.

**MARVIN DUCHOW MEMORIAL SCHOLARSHIP**

Established by the family and friends of Prof. Marvin Duchow, in his memory.

**Eligibility:** To be awarded annually to a graduate student in Music.

**Value:** Approximately \$1,300.

**MAURICE POLLACK FOUNDATION FELLOWSHIP**

Initiated by the Foundation in memory of Maurice Pollack, man of commerce and great benefactor in

**THE GOLDEN VIOLIN AWARD**

Established in 2006 through a generous gift from Canadian philanthropist Seymour Schulich. Awarded by the Schulich School of Music Scholarships Committee to an undergraduate, graduate, or diploma student in the Schulich School of Music who demon-



**Estimated value:** \$15,000 per year; renewable once at the Master's level, twice at the Doctoral level.

### 5.12.2 Biology

---

#### **ARTHUR WILLEY MEMORIAL FELLOWSHIPS**

**Eligibility:** New applicants to the M.Sc. or Ph.D. program; to be awarded on the recommendation of the Biology Department.

**Value:** \$2,500; non-renewable.

**Application:** An application for admission must be received in the Biology Department prior to March 1.

#### **PHILIP CARPENTER FELLOWSHIP IN BIOLOGY**

Established in 1892 by Mrs. Philip P. Carpenter to provide "a post-graduate teaching fellowship or scholarship in Natural Science or some branch thereof."

**Eligibility:** New applicants to the M.Sc. or Ph.D. program; to be awarded on the recommendation of the Biology Department.

**Value:** Two awards of \$2,000 each year.

**Application:** An application for admission must be received in the Biology Department prior to March 1.

#### **VINEBERG FAMILY FELLOWSHIP**

Established in 1990 by the family of Gertrude Vineberg to support research on environmental quality.

**Eligibility:** Awarded by the GPSO on the recommendation of the Executive Committee of the Limnology Research Centre to an outstanding student pursuing graduate studies and research on fresh water pollution, conservation and rehabilitation.

**Value:** \$8,000, non-renewable.

### 5.12.3 Chemistry

---

#### **CANADIAN SOCIETY FOR CHEMISTRY - MONTREAL-2001 GRADUATE AWARD**

Established in 2002 by the organizing committee of the CSC-Montreal 2001 conference to recognize excellence and distinguished academic standing by students in the Department of Chemistry.

**Eligibility:** Awarded by the Department of Chemistry to one or more outstanding graduate students to support expenses related to the presentation of a paper or papers at a major national or international conference.

**Value:** Minimum \$1,000.

#### **CARL A. WINKLER AWARD IN CHEMISTRY**

Made possible by the donations of his graduate students, colleagues, friends, and a matching gift by Polysar Limited.

**Eligibility:**





---

## **6.2 McGill Student Aid**

The Student Aid Office administers the University's need-based financial aid programs which includes short-term loans, limited bursary assistance and a Work-Study program. All applicants for aid must first apply for the maximum government assistance for which they may be eligible. The Office is located in the Brown Student Services Building, 3600 McTavish, suite 3200, Telephone (514) 398-6013/14. A limited number of small bursaries are awarded on the basis of financial need and academic standing. Funding for the bursaries comes from several different sources at McGill including an annual transfer







the purchase of books. Awards usually have a duration of 1 year (Master's) or 3 years (Ph.D.), though there may be exceptions.

**Deadline:** Deadlines depend on the duration of the academic year in host countries. As the list of countries is subject to change, the deadlines will be variable from year to year as well - it is suggested that the Website be monitored on a regular basis by interested applicants.

**Application:** Information and application forms are available on the Web at: [www.scholarships.gc.ca](http://www.scholarships.gc.ca).

The GPSO site can also be consulted: [www.mcgill.ca/gps/fellowships/grad](http://www.mcgill.ca/gps/fellowships/grad).

Website: [www.scholarships.gc.ca](http://www.scholarships.gc.ca)

### **DEUTSCHER AKADEMISCHER AUSTAUSCHDIENST (DAAD) – GERMAN ACADEMIC EXCHANGE FELLOWSHIPS**

The German Academic Exchange Se





Consulate General of Japan, 600 de la Gauchetière Street West,  
Suite 2120, Montreal, Quebec, H3B 4L8. Tel: (514) 866 3429.  
E-mail: [jftor@interlog.com](mailto:jftor@interlog.com)  
Website: [www.japanfoundationcanada.org](http://www.japanfoundationcanada.org)

#### **JAPANESE GOVERNMENT (MONBUSHO) SCHOLARSHIPS**

**Eligibility:** Scholarships in most disciplines are offered each year to Canadian citizens who wish to pursue their graduate studies in any subject in Japan. Candidates must be under 35 years of age, have a university degree and be willing to study the Japanese language.

**Value:** Travel and living allowances for up to two years are provided, plus tuition fees.

**Deadline:** Check with Consulate.

**Application:** Forms are available from Consulate General of Japan, Monbusho Scholarships, 600 de la Gauchetière Street West, Suite 2120, Montreal, Quebec, H3B 4L8.  
Tel: (514) 866-3429.

#### **MACDONALD TRAVELLING SCHOLARSHIP**

**Eligibility:** Founded by the will of the late Sir William Macdonald will be awarded by the Faculty of Law to one or more members of the graduating class, or of a recent class, with a distinguished academic record in the Faculty, to enable such student or students to pursue graduate studies in law. Preference is to be given to students who wish to pursue their graduate studies in a language other than their mother tongue, and preference is also to be given to students intending to study in a francophone institution. The income generated from this fund will be used to assist one or more students, and will be divided according to need, based on the expenses related to the programme in question.

#### **MACKENZIE KING TRAVELLING SCHOLARSHIPS**

**Eligibility:** Offered to a graduate of any Canadian university to engage in postgraduate studies in the U.S. or U.K in international or industrial relations (including international or industrial aspects of law, history, politics, economics). Applicants should be persons of unusual worth and promise. Awards are based on academic achievement, personal qualities and demonstrated aptitudes, as well as proposed program of study. McGill only considers undergraduate applicants with First Class Honours Standing (CGPA of 3.7 or higher) and graduate applicants with cumulative "straight A" records. Applicants to McGill who have graduated with a McGill undergraduate degree will automatically be considered for the Delta Upsilon and Peacock memorial scholarships.

**Value:** Approximately four scholarships per year of up to \$10,000  
Value of the award is subject to change.

**Deadline:** Normally February 1 to applicant's home university.  
Verify McGill's deadline with the GPSO Fellowships and Awards Section.

**Application:** Application is made through the "home" university, i.e, the Canadian university from which the applicant has or will receive the most recent degree. Further information and application forms, consult the agency Website:

**Application:** There are different application procedures, depend-

help cover round-trip transportation, tuition, fees, room and board expenses, and some educational supplies up to US\$23,000 or its equivalent.

**Deadline:** Are set by the individual sponsoring club (usually between March and August).

**Application:** Deadline and scholarship availability varies depending on the local to which one applies. To find your local, see their club locator at: [www.rotary.org/EN/ABOUTUS/SITETOOLS/CLUBLOCATOR/Pages/ridefault.aspx](http://www.rotary.org/EN/ABOUTUS/SITETOOLS/CLUBLOCATOR/Pages/ridefault.aspx). Applications must be made through a Rotary Club in the area of the applicant's permanent residence or place of employment. Information on the scholarship programs as well as application information and suggested locations of tenure, are available at: [www.rotary.org/en/StudentsAndYouth/EducationalPrograms/AmbassadorialScholarships/Pages/About.aspx](http://www.rotary.org/en/StudentsAndYouth/EducationalPrograms/AmbassadorialScholarships/Pages/About.aspx).

### SHASTRI INDO-CANADIAN INSTITUTE – FELLOWSHIPS COMPETITION

**Eligibility:** Candidates must be Canadian citizens or Permanent Residents and possess a Bachelor's or Master's degree. The fellowships are to be used by students to enrol in an Indian institution of higher learning, to work towards a graduate degree or by students enrolled in graduate programs at Canadian institutions to conduct research on India towards a graduate degree (such students must affiliate with an Indian institution during the period of the grant). All awards are subject to approval by the Government of India. All awardees must be affiliated with an Indian institution. The Government of India does not permit research in strategic areas or on sensitive regional, political and social themes.

**Value:** India Studies Fellowships provide a monthly living allowance of Rs 16,000 a monthly research stipend of Rs 4,000 and return airfare to India.

**Deadline:** June 30.

**Application:** For further information regarding competitions and applications, see the India Studies Fellowship Web page at: [www.ucalgary.ca/uofc/Others/SICI/apply1.html](http://www.ucalgary.ca/uofc/Others/SICI/apply1.html). Information regarding application requirements and application forms is also available from the Programme Officer, India Studies, Shastrī Indo-Canadian Institute, Room 1402, Education Tower, 2500 University Dr. NW, Calgary, Alberta, Canada T2N 1N4. Phone: (403) 220-7467, Fax: (403) 289-0100. E-mail: [sici@ucalgary.ca](mailto:sici@ucalgary.ca)

### THOMAS SHEARER STEWART TRAVELLING FELLOWSHIP

**Eligibility:** The fellowship was established in 1967 by the family of the late Thomas Shearer Stewart, QC, a graduate of the Faculty of Law class of 1908 and is granted to a recent graduate of the Faculty of Law designated by the Dean of the Faculty. Preference is given to a graduate who is a Canadian citizen intending to reside in Canada upon completion of studies.

**Value:** \$12,000, awarded at the discretion of the Faculty of Law.

**Deadline:** May 1.

**Application:** Further information is available from the Student Affairs Office, Faculty of Law.

## 9 Index of Fellowships and Awards

### A

A.F. Dunlop Scholarships	26
A.R. Gordon Awards	37
Abner Kingman Fellowships in Arts	17
Adams (Henry) Medal and Certificates of Merit	
American Institute of Architects	27
Adler (Eric L.) Fellowship in Electrical Engineering	28
Affleck (Raymond Tait) Prize in Design	27
Agnew (Janet) Scholarship	24
Ajinomoto Heartland/Halchemix Scholarship	16
Albert A. Butler Award in Orthopaedics	36
Albert Tabah Award in the Master of Library and Information Studies Program	24
Alexander A. McGregor Fellowship in Earth and Planetary Sciences	42
Alexander Mackenzie Fellowship in Political Science	21

Alexander McFee Fellowship	33
Alexander McFee Fellowship (Physical Sciences and Engineering)	32, 40
Alison (Delise) Graduate Prizes	14
Allen (Clive V.) Fellowship in International Business Law	31
Allen (F. Moyra) Prize	35
Allen Oliver Fellowships in Economics and Political Science	19, 21
Alma Mater Fellowship	10
Alma Mater Student Travel Grant	46
Alumnae Association of the McGill School of Nursing Scholarship	35
Alvaro Ortega Award	27
Alvin J. Walker Graduate Fellowship	30
Ambridge (D.W.) Award	13
American Institute of Architects	
Henry Adams Medal and Certificates of Merit	27
Amy Wong Biotechnology Award	16
Amy Wong Fellowship	15, 44
Anderson (Maureen) Prizes in Architecture	27
André Courtemanche Fellowship for Excellence in Computer Science	42
André Courtemanche Fellowships in Bioinformatics	42
Anne Dudley Noad Award	20
Antonio D'Andrea Memorial Fund	20
Architecture (School of) Fellowships	28
ARCOP/ALCAN Award	27
Armstrong (Donald E.) Award	30
Arthur and Dawn Weston Fellowship in Teaching and Learning in Higher Education	13
Arthur and Helen Henderson Scholarship	38
Arthur and Jessie Lochead Bursary Fund	37
Arthur C. Tagge Fellowship in the Humanities and Social Sciences	10
Arthur S. Hawkes Fellowship	34
Arthur Willey Memorial Fellowships	41
Arts and Science Class of 1966 Award	17, 40
Association des M.B.A. du Québec Award	30
Association of Universities and Colleges of Canada	46
Aubrey Senez Fellowship	31
Azelie de Lendrecie Clark Award	24
<b>B</b>	
B.J. Harrington Bursary in Mining Engineering	29
Bailey (Hugh) Award	15
Bailin (Joan Macfarlane) Research Award	22
Baily (Philip P.) Fellowship	11
Ballon (Edward) Graduate Award in Management	30
Barbara Graw Smythe Award In Library and Information Studies	24
Barbara Rosenthal Prize	37
Bauer (Irma H.) Research Fund	33
Beatty (Sir Edward W.) Memorial Scholarships for Medical Students	33
Beijing Memorial Award	11
Bélanger (Elaine) Graduate Studentship in Medical Research	33
Bell (Max) Foundation Fellowships	9
Bellairs (Commander C.) Graduate Fellowships	47
Bellairs (Commander C.) Postdoctoral Fellowships	45
Bennett (Roger C.) Prize in Marketing	31
Bercovitch (Dr. Lyon) Memorial Award	23
Berger (Miriam and E. Michael) Fellowship	22
Berlind (Sara) Memorial Fellowship	39
Bernard Anderson Ower Award	24
Beta Phi Mu Scholarships	24
Billingsley (Isabel) Prize In French Studies	20
Bindra (Dalbir) Fellowship	10
Binz (Max E.) Fellowship	11
Birkett (Dr. Herbert Stanley) Award	24
Bishop (J.M.) Award For Environmental Research	26
Blair Postgraduate Fellowships	15
Blanc (Paul) Bourse	46
Bland (John) Scholarship in Architecture	27
Blume (Gustav and Romana) Memorial Scholarship	38
BMO Financial Group Major Fellowships	9
Boeing Fellowships in Air and Space Law	31
Bombardier (J. Armand) Internationalist Fellowships	47
Bourke (Dr. E.T. & Mrs. Marjorie) Award	23
Bourse d'Excellence en Langue et Littérature Françaises	
Geneviève de la Tour Fondue	20
Bourse de doctorat Hydro-Québec en droit	31

Bourse de doctorat Hydro-Québec en science . . . . .	40
Bourse de maîtrise Hydro-Québec en droit . . . . .	31
Bourse de maîtrise Hydro-Québec en science . . . . .	40
Bourse de Recherche Anne Lang Etienne . . . . .	37
Bourse de Recherche en milieu clinique et Bourse d'études supérieures . . . . .	37
Bourse Paul Blanc . . . . .	46
Brace (Florence Marjorie) Award . . . . .	38
Bradbury (John) Award in Geography . . . . .	42

Drysdale (J. Keith) Manufacturing Management Graduate Fellowship . . . . .	30
Duchow (Marvin) Memorial Scholarship . . . . .	39
Dunbar (Max) Award in Oceanography . . . . .	40
Dunlop (A.F.) Scholarships . . . . .	26
DuPorte (E. Melville) Award . . . . .	16
DuPorte (Margaret) Fellowships . . . . .	16
Dworkin (Ruth and Alex) Scholarship . . . . .	33

**E**

E. Melville DuPorte Award . . . . .	16
E. Noel Spinelli Prize in Music . . . . .	38
Eastern Canada Chapter Special Libraries Association Prize . . . . .	24
Eaton (Marianna) Scholarship . . . . .	39
Eben Hopson Bursary for Study at McGill . . . . .	44
Eben Hopson Fellowship for Study at McGill . . . . .	11
Edward Ballon Graduate Award in Management . . . . .	30
Eibel (Dr. Philip) Prize In Orthopedic Surgery . . . . .	36
Eileen Peters Fellowship . . . . .	10
Elaine Bélanger Graduate Studentship in Medical Research . . . . .	33
Elizabeth and Andre Rossinger Fellowship In Canadian Rural Sustainability . . . . .	15
Elizabeth G. Hall Scholarship Fund . . . . .	24
Elizabeth Steffen Memorial Award . . . . .	33
Ellen Edith Grubb Stansfield Award . . . . .	23
Emil Nenniger Memorial Fellowship . . . . .	28
Engineering Class of 1936 Award . . . . .	26
ERIC Award . . . . .	38
Eric L. Adler Fellowship in Electrical Engineering . . . . .	28
Esterina and Gaetano Liberatore Fellowship . . . . .	10
Esther Cushing Fellowship . . . . .	33
Esther Kerry Awards . . . . .	22
Ethelwyn M. Crossley Scholarship Fund . . . . .	24
Evelyn Rocque Malowany Prize in Nursing . . . . .	35
Executive Development Institute (E.D.I.) Bursary . . . . .	30

**F**

Herbert C. Caley Award . . . . .	38
Hermant (Percy) Fellowships in Ophthalmology . . . . .	36
Herschel and Christine Victor Fellowship in Education . . . . .	23
Herschorn (H.E.) Graduate Scholarship . . . . .	30
Hiang Siang Chan Fellowship in Management . . . . .	29
Hitschfeld (Walter) Award . . . . .	11
Hong Kong Fellowship in Dentistry . . . . .	23
Hopson (Eben) Bursary for Study at McGill . . . . .	44
Hopson (Eben) Fellowship for Study at McGill . . . . .	11
Horace G. Young Fellowships . . . . .	29
Houlding (Margaret) Memorial Prize . . . . .	39
Houston Bursary . . . . .	38
Howard (William Henry) Scholarships . . . . .	42
Howard, QC (T. Palmer) Award in Canadian History . . . . .	20
Hsiang (Paul) Graduate Fellowship in Chinese Poetry and Literature . . . . .	18
Hugh Bailey Award . . . . .	15
Hugh E. Burke Research Fund . . . . .	33
Hugh MacLennan Fellowship for the Study of English . . . . .	19
Hugh MacLennan Memorial Scholarship . . . . .	27
Hunt (T. Sterry) Awards in Chemistry . . . . .	41
<b>I</b>	
I.M. Rabinowitch Fellowship . . . . .	35
Ingrid Semaan Prize . . . . .	20
Inter American Development Bank (IDB) Scholarships . . . . .	48
International Development Research Centre (IDRC) Fellowships and Research Funding . . . . .	49
International Federation of University Women (IFUW) International Fellowships . . . . .	49
Irma H. Bauer Research Fund . . . . .	33
Irma K. Riley Awards . . . . .	35
Irving Orrin Vince) Aw <sup>z</sup> .-7.5551.8( )-7.4(. )-7.4(. )-7.4(. )-7.5(. )-7.5(. )-2.6( . )-1.6( . )-1.6( . )-1.6( . )-1.6( . )-1.6( . )-1.6( . )-2.7( . )-7.5(. )-7.5(. )-7.4(. )-7.4(. )	

I  
Inte4(atiRe)7.a







Tagge (Arthur C.) Fellowship in the Humanities and Social Sciences .....	10
Tak-Hang (Bill) and Christina Chan Fellowship in Chemistry ..	41
Taylor (Mary Louise) Fellowship .....	40
Tees (Miriam H.) Scholarship .....	25
Teresa Troide Prize for Excellence in Information Studies ..	25
The 2007-2009 Ruth Shamah Scholarship .....	37
The Foundation for the Advancement of Protestant Education Graduate Fellowship in History .....	20
The Golden Violin Award .....	40
The Right Honourable Paul Martin Scholarships to the University of Cambridge .....	51
Theodore Sourkes Prize .....	36
Thomas and Willa Ferguson Smythe Fellowship .....	12
Thomas Haliburton Henry Award .....	28
Thomas Shearer Stewart Travelling Fellowship .....	52
Thomson (Dale C.) Prize in Political Science .....	21
Timmins (Jeanne) Fellowships/ Killam (Issak Walton) Scholarships (Neurosciences) .....	34
Tomlinson (Richard H.) Doctoral Fellowships .....	9
Tomlinson (Richard H.) Fellowships .....	9
Tomlinson (Richard H.) Fellowships in University Science Teaching .....	14
Tomlinson (Richard H.) Master's Fellowship in the Faculty of Science .....	9
Tomlinson (Richard H.) Postdoctoral Fellowships .....	45
Tomlinson Centennial Fellowship in Forest Ecology .....	16
Topping Memorial Bursary .....	38
Trenholme (Margery) Fellowship .....	25

177	C5	ADAMS Building	175	B3	PEEL, 3690
103	C4	ARTS Building	117	B3	PEEL, 3715
113	A3	BEATTY Hall	239	C3	PENFIELD, 740
241	B3	BELLINI Life Sciences Complex (under/en construction)	190	B4	PENFIELD, 1085
124	C4	BIRKS Building	165	B5	PETERSON Hall
185	B5	BOOKSTORE	184	D2	PINE, 515
102	B5	BRONFMAN Building	141	D2	PINE, 517
236	B4	BROWN Student Services Building	162	D3	PINE, 546
110	C5	BURNSIDE Hall	101	B3	PINE, 1033
139	D2	CURRIE Gymnasium	196	B3	PINE, 1140
128	A3	DAVIS House	120	D5	POLLACK Hall
123	C4	DAWSON Hall	158	C5	PULP AND PAPER Research Centre
122	B4	Chancellor DAY Hall	174	B3	PURVIS Hall
125	D2	DOUGLAS Hall	161	A4	RABINOVITCH House
169	D2	DUFF Medical Building	181	C5	REDPATH Hall
223	B3	DUGGAN Annex	178	C5	REDPATH Library Building
127	B3	DUGGAN House	179	C4	REDPATH Museum
168	B3	EDUCATION Building	180	D5	ROYAL VICTORIA COLLEGE Residence
129	B5	FACULTY CLUB	189	C3	RUTHERFORD Physics Building
197	C4	FERRIER Building	183	D3	SAINT-URBAIN, 3626
133	D1	GARDNER Hall	201	D6	SHERBROOKE, 550
231	B4	GELBER Law Library	233	C6	SHERBROOKE, 688
149	A3	HOSMER House	146	B6	SOLIN Hall (Lionel-Groulx Avenue)
132	A3	HOSMER Annex	111	B4	STEWART Biology Building
167	B4	HUGESSON House	154	C3	STRATHCONA Anatomy & Dentistry Building
112	C4	JAMES Administration Building	120	D5	STRATHCONA Music Building
112	C4	JAMES Annex	188	B4	THOMSON House
150	C4	LEACOCK Building	240	C3	TROTTIER Information Technology Building
119	C5	MAASS Chemistry Building	109	C4	UNIVERSITY, 3534
130	C4	MACDONALD Engineering Building	176	C3	UNIVERSITY, 3550
118	C5	MACDONALD-HARRINGTON Building	216	D3	UNIVERSITY, 3641
170	C5	MACDONALD STEWART Library Building	216	D3	UNIVERSITY, 3643
242	B6	MARTLET House	218	D3	UNIVERSITY, 3647
			172	B4	UNIVERSITY CENTRE
			198	C4	WILSON Hall
			229	C3	WONG Building
105	D1	McCONNELL Arena			
131	C4	McCONNELL Engineering Building			
221	D1	McCONNELL Hall			
186	C6	McCORD Museum			
155	B3	McINTYRE Medical Building			
108	C5	McLENNAN Library Building			
135	B5	McTAVISH, 3430			
114	B5	McTAVISH, 3434			
104	B5	McTAVISH, 3438			
147	B3	MEREDITH Annex			
173	B3	Charles MEREDITH House			
148	B3	Lady MEREDITH House			
116	D1	MOLSON Hall			
106	D2	MOLSON Stadium			
156	A4	de la MONTAGNE, 3605			
159	D2	MONTREAL NEUROLOGICAL INSTITUTE			
163	C4	MORRICE Hall			
134	D1	Bishop MOUNTAIN Hall			
103	C4	MOYSE Hall			
245	D5	MUSIC, New Building			
227	D2	OBSERVATORY			
247	D3	du PARC, 3575			
244	D3	du PARC, 3625			
248	B5	PEEL, 1555 (Les Cours Mont-Royal)			
143	B5	PEEL, 3437			
191	B5	PEEL, 3459			
192	B5	PEEL, 3463			
140	B5	PEEL, 3465			
136	B5	PEEL, 3475			
151	B4	PEEL, 3479			
213	B4	PEEL, 3483			
187	B4	PEEL, 3487			
145	B4	PEEL, 3491			
138	B4	PEEL, 3495			
230	B4	PEEL, 3505			
194	B4	PEEL, 3647			
137	B4	PEEL, 3661			
166	B3	PEEL, 3674			





— NOTES —

— NOTES —

