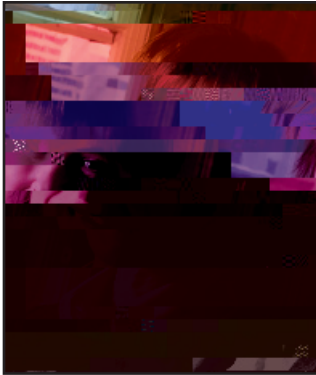


Principal's Message

2008-09



Welcome to McGill!

For more than 185 years, McGill has distinguished itself as one of the world's great public universities, renowned for outstanding students, professors and alumni, for achievement in teaching and research, and for its distinctive international character.

As one of the top 12 universities in the world, McGill's defining strengths include its unwavering commitment to excellence, and a willingness to be judged by the highest standards. And by these standards, McGill has excelled far beyond any reasonable expectations. We have produced a disproportionate number of Nobel laureates and Rhodes scholars. Olympians, award-winning authors and musicians, astronauts, medical pioneers and world-famous leaders in all walks of life are counted among our alumni — remarkable individuals who have shaped our society and the course of history itself in profound ways.

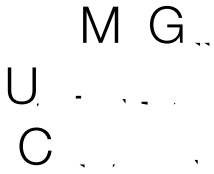
As students you are at the core of all that we do. Your time at McGill offers more than an excellent education. It is a critical period of personal and intellectual discovery and growth, and one that will help shape your understanding of the world.

By choosing McGill, you are following in the footsteps of almost 200,000 living McGill alumni across the globe and making a commitment to excellence, as they did. And, while a lot is expected of you, McGill gives you the means to succeed. All of McGill's 21 faculties and professional schools strive to offer the best education possible. By joining the McGill community of scholars, you will experience the University's vibrant learning environment and active and diverse campus life, which support both academic progress and personal development. You will form lasting friendships with people from around the world.

Today's social, technological and medical challenges continue to inspire innovative approaches to research, teaching and learning. New cutting-edge facilities provide you with many state-of-the-art classrooms and laboratories. Likewise, McGill's professors thrive in this environment as they enjoy some of the highest research successes per fulltime professor in Canada, while dedicating themselves as well, to enrich your education with research. Our dedicated administrative and support staff's primary focus is to ensure that you have the necessary resources to respond effectively to academic challenges and to develop lifelong skills.

McGill University has been synonymous with first-class education and research since it was founded in 1821. We remain committed to your success.

Professor Heather Munroe-Blum
Principal and Vice-Chancellor



Undergraduate Scholarships and Awards

Published by:

Enrolment Services

McGill University

845 Sherbrooke Street West

Montreal, Quebec, Canada

H3A 2T5

Published May 2008

McGill University reserves the right to make changes to the information contained in this publication - including correcting errors, altering fees, schedules of admission and credit requirements and revising or cancelling particular courses or programs - without prior notification.

Printed in Canada

All contents copyright © 2008 by McGill University. All rights reserved, including the right to reproduce this publication, or portions thereof, in any form.

Legal deposit 2008, National Library of Canada and Bibliothèque nationale du Québec
ISSN 1718-8776

Editor

Bonnie Borenstein

Enrolment Services

Co-Editors

Claudio Calligaris

Owen Egan

Co-Editorial Design

Content and Collaboration Solutions



Undergraduate Scholarships and Awards 2008-2009

Principal's Message, page 1

Publishing Information, page 2

Undergraduate Scholarships and Awards 2008-2009, page 3

1 Introduction, page 4

- 1.1 Entrance Awards, page 4
- 1.2 In-Course Awards, page 4
- 1.3 Graduating Awards, page 4
- 1.4 External Awards, page 5

2 Entrance Scholarships and Awards, page 5

- 2.1 General Information, page 5
- 2.2 Entrance Scholarships and Awards, page 5

3 Awards to McGill Students In-Course, page 11

- 3.1 General Information, page 11
- 3.2 Open to Students in Most Faculties, page 11
- 3.3 Faculty of Agricultural and Environmental Sciences, page 11
- 3.4 Faculty of Arts, page 17
- 3.5 Faculty of Dentistry, page 26
- 3.6 Faculty of Education, page 26
- 3.7 Faculty of Engineering (including Architecture), page 28
- 3.8 Faculty of Law, page 36
- 3.9 Desautels Faculty of Management of McGill University, page 36
- 3.10 Faculty of Medicine, page 40
- 3.11 The Schulich School of Music of McGill University, page 40
- 3.12 School of Nursing, page 46
- 3.13 School of Physical and Occupational Therapy, page 46
- 3.14 Faculty of Religious Studies, page 46
- 3.15 Faculty of Science, page 46
- 3.16 School of Social Work, page 53
- 3.17 Restricted Funds, page 54

4 Financial Assistance, page 54

- 4.1 General Information, page 54
- 4.2 Federal and Provincial Loans and Bursaries, page 55
- 4.3 Major Entrance Bursaries, page 55
- 4.4 Bursaries and Scholarships, page 56
- 4.5 Loan Funds, page 69

5 Activity Awards, page 71

- 5.1 Open to all In-Course Students, page 71
- 5.2 Open to In-Course Students in the Faculty of Education, page 71
- 5.3 Open to In-Course Students in the Desautels Faculty of Management, page 72

6 Athletic Awards, page 73

- 6.1 Open to Entering Students, page 73
- 6.2 Open to In-Course Students, page 75

7 External Awards, page 76

8 Index of Awards, page 76

CONTACT INFORMATION – SCHOLARSHIPS AND STUDENTS AID OFFICE

Scholarships and Student Aid Office
Brown Student Services Building
3600 McTavish
Suite 3200
Montreal, Quebec
H3A 1Y2

The University reserves the right to make changes without prior notice to the information contained in this publication.

DAVID TAT-CHI LIN ENTRANCE SCHOLARSHIP

Established in 2003 by David Tat-Chi Lin, M.D.,C.M. 1983, for an outstanding undergraduate student entering a full-time degree program in the Faculty of Science. While academic standing is of primary importance, account may also be taken of qualities of leadership in community and school activities. Awarded by the University Committee on Scholarships and Student Aid. Preference shall be given to students who are not residents of Quebec. Value: minimum \$3,000; renewable.

SIR WILLIAM MACDONALD SCHOLARSHIPS

Established in 1881 by the late Sir William Macdonald. Available to students with outstanding merit entering any full-time undergraduate degree program. While academic standing is of primary importance, account may also be taken of financial need and/or qualities of leadership in community and school activities. Awarded by the University Committee on Scholarships and Student Aid and renewable provided the holder maintains an academic standing satisfactory to the Committee. Value: minimum \$2,000 each.

JOHN H. MAHON SCHOLARSHIPS

Established in 1998 by John H. Mahon, B.Sc. 1948, M.Sc. 1949, Ph.D. 1953, for students entering the Faculty of Science. Available to outstanding students on the basis of academic standing and community or school leadership and/or financial need. Awarded by the University Committee on Scholarships and Student Aid and renewable provided the holder maintains an academic standing satisfactory to the Committee. Value: minimum \$2,000 each.

JAMES DAVIDSON MCCALL SCHOLARSHIPS

Founded by his family in memory of James Davidson McCall, B.Eng., who was accidentally killed in September 1953, the year of his graduation. Awarded to students proceeding to degrees in any faculty with a preference to students entering Engineering. While academic standing is of primary importance, account may also be taken of financial need and/or qualities of leadership in community and school activities. Awarded by the University Committee on Scholarships and Student Aid and renewable provided the holder maintains an academic standing satisfactory to the Committee. Value: minimum \$2,000 each.

MCCALL MACBAIN SCHOLARSHIPS

Established in 1994 by John H. Mc

program, who have high academic standing and show a keen interest in dairying or a dairy-related subject. Preference is given to students from the Eastern Townships in Quebec.
Value: two at \$2,000 (degree students) or \$500 (FMT students).

EMILE A. LODS MEMORIAL PRIZE

Given in memory of Emile A. Lods, M.S.A., D.Sc., F.A.I.C., and awarded to a student who has completed two years of the Plant Science Major.
Value: \$600.

F. MENARD INC. PRIZE

To encourage practical and theoretical knowledge of the industry, this prize is awarded to the B.Sc.(Agr.)/B.Sc.(Ag.Env.Sc.) student who has experience on a swine farm through employment or a stage and who attained the highest grade in the Swine Production course.

Value: \$250.

FACULTY OF AGRICULTURAL AND ENVIRONMENTAL SCIENCES SCHOLARSHIPS FUND

Established in 1992 by the University to provide awards based on academic achievement to students in the top 5% of the Faculty. Granted by the Faculty of Agricultural and Environmental Sciences Scholarships Committee to equalize the value of awards to students of comparable standing. Awards range in value from \$100 to the level of the major entrance scholarships, in increments of \$100.

FOOD AND NUTRITION RESEARCH FOUNDATION SCHOLARSHIPS

Established by a generous gift from the Food and Nutrition Research Foundation upon its dissolution in 1998. Two awards for students entering their final year of study in any program in the Faculty. Consideration will be given to high academic standing and a serious quest for new knowledge in human nutrition, food science or food engineering. Awarded by the Faculty of Agricultural and Environmental Sciences Scholarships Committee.
Value: \$2,000 each.

FREDERICA CAMPBELL MACFARLANE PRIZE

Donated by the Quebec Women's Institute in memory of the late Frederica Campbell MacFarlane, graduate in Institution Administration, 1912, Superintendent of the Quebec Women's Institute from 1913 to 1919. Open only to students from a rural district of the Province of Quebec, and awarded on the results of the final examinations in any year of the B.Sc.(Nutr.Sc.) program.
Value: determined annually.

GEORGE DION MEMORIAL SCHOLARSHIP

Established by the family of Dr. George Dion, former Dean and Vice-Principal of Macdonald College from 1955 to 1971, in memory of his years of outstanding service to McGill University and the College. Awarded by the Faculty of Agricultural and Environmental Sciences Scholarships Committee on the basis of high academic standing to a student who has completed at least one year of a B.Sc. (Ag.Env.Sc.) program within the Faculty.
Value: \$3,000.

GERRY FRIARS UNDERGRADUATE RESEARCH CONVOCATION AWARD

Established through an endowment from Dr. Gerry W. Friars, a graduate of Macdonald College, B.Sc. (Agr.) 1951, to encourage worthy candidates to pursue postgraduate studies. Awarded by the Faculty of Agricultural and Environmental Sciences Scholarships Committee to an undergraduate student studying in an academic program on the Macdonald Campus who has demonstrated academic excellence and who has been accepted into an undergraduate summer research program.
Value: minimum \$325.

GIRVIN-ROBERTSON CONVOCATION PRIZE IN MICROBIOLOGY

Established by a donation by Grace T. Girvin-Robertson, long-time lecturer in the Microbiology Department. Awarded to a student in the Microbiology Major exhibiting excellence in the final year project.
Value: \$150.

GRAY BOOK PRIZE IN MICROBIOLOGY

In honour of Prof. P.H.H. Gray, long time Chairman of the Department of Microbiology. Awarded annually by the Department of Natural Resource Sciences to the student majoring in Microbiology who has demonstrated academic excellence and the most promise in the second year of the program.

GUY PROULX MEMORIAL PRIZE

Awarded to a student entering the final year of a Bachelor's degree program in the Faculty of Agricultural and Environmental Sciences. Guy Proulx died following a tragic car accident at the age of 23. He was a good student, athlete and participant in student affairs. The prize will be given to a student having similar characteristics.
Value: \$100.

HARRISON BOOK PRIZE IN MICROBIOLOGY

In honour of Principal F.C. Harrison, first Chairman of the Department of Microbiology. Awarded annually by the Department of Natural Resource Sciences to the student majoring in Microbiology who has demonstrated academic excellence and the most promise in the First Year of the program.

HARRISON CONVOCATION PRIZE

Established by an endowment under the will of the late Dr. F.C. Harrison, Principal of Macdonald College from 1910 until 1926. Awarded for academic excellence to a student in the graduating year of the B.Sc.(Nutr.Sc.) program.

HELEN R. NEILSON SCHOLARSHIP

Established in honour of Emeritus Professor Helen R. Neilson. Awarded to a student in Dietetics and Human Nutrition who has completed the second year of the program, demonstrated academic excellence, and shown outstanding promise for a career in dietetics.
Value: minimum \$2,500.

HENNEBERRY SCHOLARSHIP

Established in 2007 through a bequest from Professor Celia Henneberry in memory of Professors Gerald O. Henneberry and Celia Fergusson Henneberry. Awarded by the Scholarships Committee of the Faculty of Agricultural and Environmental Sciences on the recommendation of the School of Dietetics and Human Nutrition to an undergraduate student entering the final year of any Major offered through the School. Awarded on the basis of academic merit and continuing commitment to the fields of dietetics and/or human nutrition.

Eligibility: Students must apply to the Director of the School of Dietetics and Human Nutrition by May 1st. A cover letter and curriculum vitae outlining commitment to the fields of dietetics and/or human nutrition are required.
Estimated value: \$1,200.

HOLLIS J.M. FISKE SCHOLARSHIPS

Three scholarships established by a bequest of Sarah Jane Fiske in memory of her husband who was a graduate of Macdonald College. Awarded for outstanding academic achievement to students in the first or second years of the B.Sc.(Agr.)/B.Sc.(Ag.Env.Sc.), B.Sc.(F.Sc.), B.Sc.(Nutr.Sc.), B.Eng.(Bioresource) programs. Preference is given to Canadians.
Value: \$800 each.

W.G. MACDOUGALL MEMORIAL SCHOLARSHIP

Awarded to a student who obtains very high standing in the second year of the Animal Science Major. Mr. W.G. MacDougall graduated from Macdonald College in 1915. He is especially remembered for his enthusiastic work as an agronomer in Sherbrooke and Stanstead counties and for his encouragement of farm youth to advance their education and become involved in improvements in farming and agri-business. This scholarship results from an endowment fund established by his children. Awarded by the Faculty of Agricultural and Environmental Sciences Scholarships Committee.
Value: \$1,400.

WILLIAM ROWLES BURSARY

Awarded each year from a fund set up in honour of Professor Emeritus William Rowles, who was for many years an outstanding teacher of physics and mathematics in the Faculty of Agricultural and Environmental Sciences. To be given to a student in good academic standing who has financial need.
Value: \$1,500.

YARA CANADA INC. PRIZE

Awarded to a student entering the third year of the B.Sc.(Agr.)/B.Sc.(Ag.Env.Sc.) program who has demonstrated high academic achievement in soil science/crop production and shows particular interest in the interactions of soils and fertilizers.
Value: \$1,000.

MEDALS**MACDONALD MEDALS**

As a tribute to Sir William Macdonald, and in recognition of academic achievement, Mrs. Walter M. Stewart and the late Mr. Stewart of Montreal established medals to be awarded to the full-time students with the highest aggregate standing in the first and second years respectively of the B.Sc.(Agr.)/B.Sc.(Ag.Env.Sc.), B.Sc.(Agr.Eng.)/B.Eng.(Bioresource) and B.Sc.(F.Sc.) programs.

STEWART MEDALS

Named in recognition of the support of the late Mr. and Mrs. Walter M. Stewart in the academic progress and welfare of Macdonald students, and awarded for academic achievement to the full-time students with the highest aggregate standing in the first and second years of the B.Sc.(Nutr.Sc.) program.

3.4 Faculty of Arts

For entrance scholarships, see "Entrance Scholarships and Awards", section 2.

For scholarships and prizes open to undergraduates in all Faculties, see "Open to Students in Most Faculties", section 3.2.

For financial assistance, see "Financial Assistance", section 4.

General Regulations in Arts

1. No applications are required. Unless otherwise stated, awards are made by the Faculty of Arts Scholarships Committee on the basis of academic standing in the regular session.
2. Unless restricted by the deed of gift or faculty regulations the awards are open to all students studying for the B.A. degree.
3. Only those students who have completed at least 27 **graded** credits in the Regular Session of the academic year preceding the award will be eligible for scholarships.
4. Scholarships will be awarded only if an adequate standard is attained for scholarship recognition.
5. If in any university year there is not a sufficient number of candidates showing adequate merit, any one or more of the scholarships offered for competition may be given to more deserving candidates in another year.
6. In order to retain a scholarship a successful candidate must proceed regularly in a degree program in the Faculty of Arts and fulfill any other conditions prescribed for the scholarship.

ACADEMY OF ATHENS PRIZE

One or more prizes awarded to students of high academic standing who are in the final year of the Major in Classics. Awarded on recommendation of the Classics Program Committee, Department of History.
Value: \$100 each.

MONA ELAINE ADILMAN POETRY PRIZE

Established in 1992 by a bequest from Mona Elaine Adilman Solomon, B.A. 1945. Awarded annually to one or two graduate or undergraduate students (graduating or continuing) who have demonstrated outstanding talent in the area of poetry. Awarded by the Faculty of Arts Scholarships Committee on the recommendation of the Department of English.
Value: \$700 (or two at \$350).

CHARLES ALEXANDER SCHOLARSHIP

Established in 1870 "for the encouragement of the study of Classics and other subjects."
Value: \$1,200.

MARGARET JANE ALLAN SCHOLARSHIP

Bequeathed in 1929 to the Royal Victoria College by Mrs. Agnes W. Allan for the woman student with the highest standing in the initial year of the B.A. course.
Value: \$1,200.

AUSTRIAN GOVERNMENT PRIZE

A book prize for a student who has excelled in German.

DR. JAMES BARCLAY SCHOLARSHIP

Awarded to a student in the Classics Program, Department of History.
Value: \$900.

HARRY BARKER MEMORIAL PRIZE IN ENGLISH

Bequeathed by the late Miss Dinah Lee in memory of the late Mr. Harry Barker. Awarded to the student with the highest standing in English in the initial year. Awarded on recommendation of the Department of English.
Value: \$700.

HOPE BARRINGTON SCHOLARSHIP

Established in 1997 following a bequest to the Friends of McGill, Inc. from Hope Barrington, B.A. 1929. Awarded to an Arts student who has completed at least one year of undergraduate study. Awarded by the Faculty of Arts Scholarships Committee based on academic standing.
Value: minimum \$2,000.

LOUIS AND BESSIE BATIST PRIZE

Established by the Batist family for an undergraduate student showing excellence in the area of Jewish Studies. Awarded on recommendation of the Chair of the Department of Jewish Studies.
Value: \$500.

C.C. BAYLEY PRIZE IN HISTORY

Established in honour of Professor C.C. Bayley who taught in the Department of History between 1932 and 1996. Awarded by the Faculty of Arts Scholarships Committee, on the recommendation of the History Department, to a graduating student with a major concentration in History, on the basis of academic standing.
Value: \$500.

SIR EDWARD BEATTY MEMORIAL SCHOLARSHIPS IN CLASSICS

Three awards established (in 1927) by the late Sir Edward Beatty, former Chancellor of the University. Awarded in recognition of high academic merit to students entering the intermediate or final year in Major or Honours Classics. Awarded on the recommendation of the Classics Program Committee, Department of History. If in any year there is not a sufficient number of qualified candidates

in Classics, the remaining awards will be open to students in any department in the Faculty of Arts.
Value: \$1,900 each.

SHEILA BECKER SCHOLARSHIP IN JEWISH STUDIES

Established in 2007 by the Becker family and friends in memory of Sheila Becker, B.A. 1961. An active researcher on the Holocaust, Sheila was known for her strong interest in Jewish culture. Awarded by the Faculty of Arts Scholarships Committee on the recommendation of the Jewish Studies Department to an outstanding student who has completed at least one year of an undergraduate degree program of the Department of Jewish Studies.
Estimated value: \$4,500.

NORMAN BERMAN MEMORIAL PRIZE

Established in 1973 by Mr. and Mrs. Joseph Berman. An annual prize or prizes will be awarded to students for: 1) Excellence in the field of Judaic studies. 2) A critical study in the field of Hebrew or Yiddish language and literature or a translation of an important work of Hebrew or Yiddish literature into English or French. Awarded on the recommendation of the Chair of the Department of Jewish Studies.
Value: \$1,000.

DR. NORMAN BETHUNE MEMORIAL AWARD

Initially established by a donation from the late Mr. W.A. Scott, founding member and Honorary President of Victoria's Canada-China Friendship Association in memory of Dr. Norman Bethune. Awarded to an outstanding student at the conclusion of the first or intermediate year in the Faculty of Arts, with preference given to a student who is registered in any program relating to Chinese studies. Awarded upon recommendation of the Department of East Asian Studies.
Value: \$400.

ESTELLE H. GOODMAN PRIZE

Established in 2003 by a bequest from Mortimer Goodman in honour of his wife, Estelle H. Goodman (née Blumenthal), B.A. 1935. Awarded on the basis of high academic standing by the Faculty of Arts Scholarships Committee.
Value: minimum \$500.

GREAT-WEST LIFE AND LONDON LIFE SCHOLARSHIP IN ARTS

Established in 2003 by Great-West Life and London Life for an outstanding undergraduate student in the penultimate or final year of a full-time degree program in the Faculty of Arts. Awarded by the Faculty of Arts Scholarships Committee on recommendations from the Departments of Economics and French Language and Literature to a student with a major concentration or honours in Economics or French Language and Literature. Preference will be given to students involved in extra-curricular or community activities.

Value: minimum \$2,000.

GREEK AMBASSADOR'S BOOK PRIZES

First prize awarded to a student of high standing graduating with a Major in Classics. Second prize awarded to a graduating student who has completed at least twelve credits in Modern Greek and who has shown distinct promise in the subject. Awarded on recommendation of the Classics Program Committee, Department of History.

GREEK EMBASSY BOOK PRIZES IN GREEK ARCHAEOLOGY

Three book prizes to be awarded annually to the best student in Greek archaeology in each year (U1, U2, U3). Awarded on the recommendation of the Classics Program Committee, Department of History.

GREEK MINISTRY OF CULTURE AND SCIENCES SCHOLARSHIPS

One or more scholarships for one month's study at the International Summer School in Thessaloniki, preceded by a ten day stay in Athens. Each scholarship covers fees, room and board and the round trip Athens-Thessaloniki. Travel expenses to and from Greece are not covered. Open to students in any year. Awarded on recommendation of the Classics Program Committee, Department of History.

MAURICE AND SARA GREENBLATT MEMORIAL SCHOLARSHIPS

Three scholarships bequeathed by Mrs. Greenblatt, for students proceeding from the intermediate year(s) to the final year, preference given to students in Modern Languages (other than English) or in History. Awarded by the Faculty of Arts Scholarships Committee on the recommendation of the Department of History and departments offering Modern Languages; one prize for Modern Languages, one prize for History and one prize for Languages or History based on the highest yearly GPA.
Value: \$850 each.

REVEREND DOMENICO ROBERTO GUALTIERI PRIZE

Established in 1999 by Mr. Roberto Gualtieri, B.A. 1957, to honour and preserve the memory of his father, the Reverend Domenico Roberto Gualtieri (1888-1952), pastor, publisher and humanist who believed that the church had a social as well as religious role in society. Awarded by the Faculty of Arts Scholarships Committee on the recommendation of the Department of Philosophy to an outstanding undergraduate student in the first or second year of a Philosophy program who has demonstrated academic excellence and involvement in community or university affairs.
Estimated value: \$750.

HAGERMAN PRIZE

Established in 1996 by Joan Hagerman, a long-time McGill employee, to recognize distinguished academic standing by a student who is in and will be continuing in an undergraduate degree program. Awarded by the Faculty of Arts Scholarships Committee

in odd-numbered years and by the Faculty of Science Scholarships Committee in even-numbered years.
Value: \$250.

HANG CHANG CHOON SCHOLARSHIP

Established in 1999 through a generous gift from Mr. Hang Chang Choon, M.B.A. 1977. Presented annually by the Faculty of Arts Scholarships Committee to a student in any department in the Faculty of Arts who has demonstrated academic excellence and completed at least one year of study.
Value: \$5,000.

HISTORICAL SOCIETY'S PRIZE

Awarded jointly by the Executive of the Historical Society and the Chairman of the Department of History to the undergraduate in the initial year showing the greatest promise in History and in-

ANGELA C. KRAMER MEMORIAL AWARD IN GERMAN STUDIES

Established in 2003 by Ingeborg Kramer, former Rare Books and Special Collections editor at McGill, in honour and in memory of her daughter, Angela C. Kramer, B.A. 1973, M.L.S. 1975, who suddenly passed away on March 12, 2003 at the age of 52. Angela Kramer joined the Morisset Library of the University of Ottawa as a librarian/specialist in 1975 and worked closely with professors and students of the School of Management and the Faculty of Social Sciences. Awarded by the Faculty of Arts Scholarships Committee on the recommendation of the German Studies Department to an outstanding undergraduate student in the Department.

Value: minimum \$1,500.

NORAH M. LENOIR PRIZE

Bequeathed by Norah M. Lenoir M.A. (McGill) 1948, who was appointed Assistant in French in the Department of Romance Languages in 1943-44 and was Lecturer in the same Department from 1944 to 1952. Awarded to a student for excellence in the final year in French Language and Literature by the Faculty of Arts Scholarships Committee on the recommendation of the Department of French Language and Literature.

Value: \$100.

CLARK LEWIS MEMORIAL PRIZE

Established in 1984 by family and friends in memory of Clark Lewis, a Canadian magazine writer and copywriter. Awarded annually or from time to time for the best submission in creative writing of a dramatic piece. The contest is open to Major and Honours students in the Department of English and will be adjudicated by a committee appointed by the Chair. The award may occasionally be given for creative work in drama other than written work.

Awarded on the recommendation of the Department of English.

Value: \$450.

HANNAH WILLARD LYMAN MEMORIAL SCHOLARSHIP

To a woman student of the intermediate or final year of the B.A. course.

Value: \$1,200.

SIR WILLIAM MACDONALD SCHOLARSHIPS

Two scholarships open to all students in the intermediate and final years.

Value: \$800 each.

KAY MACIVER MEMORIAL PRIZE

Established in 1980 by Emeritus Professor of Music Helmut Blume in memory of Catherine Claire ("Kay") MacIver, outstanding Canadian broadcaster. For the best English essay by an undergraduate on a subject in the field of English Canadian or French Canadian Literature. Awarded on the recommendation of the Department of English.

Value: \$500.

Department of History.

Value: \$3,000. **Details available from the Department of History.**

MCGILL ALUMNAE GEORGINA HUNTER SCHOLARSHIP

Established in memory of the late Georgina Hunter, a member of the first graduating class of women at McGill University, the first President of the Alumnae Society, and a former Principal of the High School for Girls, Montreal. Awarded to a distinguished woman student.

Value: \$2,000.

MCGILL ALUMNAE CATHERINE I. MACKENZIE SCHOLARSHIP

Established in memory of the late Miss Catherine I. Mackenzie,

Hispanic Studies. Awarded by the Faculty of Arts Scholarships Committee on the recommendation of the Department of Hispanic Studies.

Value: \$1,400.

PELLETIER PRIZE

Established in 1999 by a bequest from Fraser Holiday Pelletier in memory of his mother, Annie Holiday Pelletier, B.A. 1899, and Gold Medalist, his father, Alexis

enrolled in a full-time degree program in Linguistics. Preference shall be given to students in Neurolinguistics and/or Morphology. Value: minimum \$500.

HOWARD E. ROSEBOROUGH PRIZE

Established in 1984 by colleagues and friends of the late Professor Howard E. Roseborough, first Chairman of the Department of Sociology. Awarded to the U1 or U2 student in Major or Honours Sociology with the most outstanding paper written in a Sociology course. Awarded on t

are entering the last year of the B.Ed. program in Physical and Health Education.
Value: \$2,000 each.

JOHN CHOMAY AWARD

Established by friends, colleagues and former students in honour of Professor John Chomay, a member of the Department of Physical Education from 1969 to 1990. Awarded on the basis of aca-

Value: minimum \$1,600. **Students must ap**

HABIB ABOU-FAYSSAL MEMORIAL PRIZE

Established in 2001 by family and friends to honour the memory of Habib Abou-Fayssal, B.Eng. 1996, Operations Engineer at the Canadian Space Agency. Habib, who died at the age of 26 in a tragic accident, will be remembered for his bright spirit and his generous heart. Awarded by the Faculty of Engineering Scholarships Committee to a student in good academic standing in the Honours Program in the Department of Mechanical Engineering. Value: minimum \$500.

ACCENTURE PRIZE IN ENGINEERING AND SCIENCE

Established in 2000 by Andersen Consulting. Awarded by the Faculties of Engineering or Science to a student entering the final year in Electrical and Computer Engineering or the School of Computer Science (alternately). Awarded by the Faculty Scholarships Committees, upon recommendation of the respective departments, on the basis of academic excellence and demonstrated leadership qualities. Value: minimum \$1,000.

ACDEG SCHOLARSHIP IN CHEMICAL ENGINEERING

Established in 2002 by Dr. David T. Fung, B.Eng. 1970, M.Eng.

program who has made an outstanding contribution to extracurricular activities in the School of Architecture.
Estimated value: \$2,000.

ENGINEERING CLASS OF 1953 SCHOLARSHIP

Established in 2005 by the Engineering Class of 1953, in celebration of their 50th anniversary, for an outstanding undergraduate student who has completed at least one year of a B.Eng. program. Awarded on the basis of high academic standing by the Faculty of Engineering Scholarships Committee.
Value: \$2,000.

ENGINEERING CLASS OF 1962 SCHOLARSHIP

Established in 2005 by the Engineering Class of 1962 in celebration of their 40th Anniversary. Awarded by the Faculty of Engineering Scholarships Committee to an undergraduate student in good academic standing who has completed a minimum of one year of studies and who has demonstrated strong leadership qualities and active campus or community involvement.
Value: \$2,000.

ENGINEERING INSTITUTE OF CANADA (ASSOCIATE SECTION, MONTREAL BRANCH) PRIZES

Two prizes for the best and second best papers in any branch of engineering presented at the Annual Students' Night sponsored by the Student Guidance Committee. Details may be obtained from the Faculty representative of the Engineering Institute of Canada.
Value: \$50 and \$25.

NEVIL NORTON EVANS SCHOLARSHIP

Established in 1937 by graduates of the Faculty of Applied Science (Engineering) to commemorate the work of Professor Nevil Norton Evans, formerly Professor of Chemistry. Open to students in Engineering who show outstanding ability in Chemistry.
Value: \$1,000.

FACULTY OF ENGINEERING SCHOLARSHIPS FUND

Established in 1992 by the University to provide awards based on academic achievement to students in the top 5% of the Faculty. Granted by the Faculty of Engineering Scholarships Committee to equalize the value of awards to students of comparable standing. Awards range in value from \$100 to the level of the major entrance scholarships, in increments of \$100.

FAVRETTO SCHOLARSHIP IN ARCHITECTURE

Established in 1992 through the generosity of Angelo Favretto, B.Arch. 1947, to provide scholarships for students having completed at least one year and continuing in an undergraduate degree program in Architecture. Awarded on the basis of high academic achievement and performance in projects, by the School of Architecture. The scholarships may be renewed on the same basis at the discretion of the School.
Value: \$2,000.

KARL FISCHER SCHOLARSHIP

Established in 2001 by Pamela and Karl Fischer, B.Sc. (Arch.) 1971, B.Arch. 1972. Awarded by the School of Architecture to a student graduating with the B.Sc. (Arch.) degree who has demonstrated excellence in the development of pragmatic solutions to architectural problems.
Value: \$2,000.

AARON FISH SCHOLARSHIPS IN MECHANICAL

R.G.K. MORRISON AWARD

Established in honour of Prof. R.G.K. Morrison, Chairman of the Department of Mining Engineering and Applied Geophysics 1949-1966. Kerr Addison Mines Limited is responsible for supporting this award. Awarded upon the recommendation of the Department of Mining and Materials Engineering to a student in the Mining Engineering course. If there is no suitable candidate for a particular year at the undergraduate level, the award may become

SAVARD AND LEE SCHOLARSHIP

Awarded on the basis of high academic standing to a First Year student in the Materials Engineering program. Established by Air Liquide Canada Ltée in honour of Guy Savard and Robert Lee (B.Eng. 1947) to recognize their ac

activities within the Department. Preference will be given to students in Materials Engineering. Awarded by the Faculty of Engineering Scholarships Committee on the recommendation of the Department of Mining and Materials Engineering.
Value: \$3,000.

STUART A. WILSON MEMORIAL PRIZE

Established in 1991 in memory of Stuart Anthony Wilson by family, friends and colleagues. Stuart Wilson graduated from the McGill School of Architecture in 1943 and taught there from 1948 to 1991. The prize is awarded by a committee of staff of the School of Architecture to the student with the best portfolio of work in the annual Sketching School.
Value: \$150.

STUART ALBERT WISDOM MEMORIAL SCHOLARSHIP

Established in 1953 by Mrs. Stuart Albert Wisdom as a memorial to her late husband, B.Sc. (Mining and Metallurgy) 1909, and to commemorate his outstanding contributions to the field of metallurgy and, in particular, his invention of the process for the manufacture of acetylene black. Awarded on the recommendation of the Department of Mining and Materials Engineering to a student entering the Third Year of Materials Engineering who has shown high scholastic ability and engineering promise.
Value: \$2,400.

WOMEN ASSOCIATES OF MCGILL SCHOLARSHIP

To be awarded for high academic standing to an undergraduate student having completed at least one year in the B.Eng. program.
Value: \$1,500.

CLIFFORD C.F. WONG SCHOLARSHIP

Endowed in 1989 by the late Clifford C.F. Wong, B.Arch. 1960, to recognize distinguished academic standing. Awarded by the Faculty of Engineering Scholarships Committee to a continuing student having completed at least one year in the Bachelor of Engineering program. Value: \$1,500.

CLIFFORD C.F. WONG SCHOLARSHIPS

Two scholarships endowed in 1981 by Mr. Clifford Wong, B.Arch. 1960. For undergraduate students having completed second year with high academic standing and who have demonstrated leadership, either academic or otherwise, during the first two years of their studies. Awarded on the recommendation of the School of Architecture.
Value: \$1,000 each.

awards, eligible students are automatically considered by the Faculty Scholarships Committee.

ACCENTURE PRIZE

Awarded to a B.Com. student entering the final year of studies in the Information Systems (IS) Major or Concentration. Awarded on the basis of academic standing and contribution to the Faculty's IS program.

Value: \$1,000.

GARY AND WENDY BALTER SCHOLARSHIP IN MANAGEMENT

Established in 2000 by Gary J. Balter, B.Com. 1979, DPA 1980 and Wendy Balter, B.Com. 1980, for an outstanding undergraduate student who has completed at least one year of a B.Com. program. Awarded on the basis of high academic standing by the Faculty of Management Scholarships Committee. Preference will be given to students majoring in Financial Accounting and who are residents of Montreal.

Value: minimum \$2,000.

ROBERT BRUCE SCHOLARSHIPS

Bequeathed by the late Robert Bruce, of Quebec City. Two scholarships, awarded for high academic standing to students entering the final year by the Faculty of Management Scholarships Committee.

Value: \$200 each.

CHERRY PRIZES

See "Faculty of Agricultural and Environmental Sciences", section mittee.

DR. M. RICHARD GELFAND PRIZE IN MARKETING

Awarded to a final year student in the Management Concentration Group who is registered in the area of Marketing.
Value: \$500.

STEPHEN S. GOLDBLOOM MEMORIAL PRIZE

Established by friends and classmates in memory of Stephen S. Goldbloom, a second year Management student active in campus

MCGILL ACCOUNTING SOCIETY PRIZE

Originally established in 1995 by an endowment from the McGill Accounting Club with additional contributions from the McGill Accounting Society. Awarded annually by the Faculty of Management Scholarships Committee to a graduating commerce undergraduate in the Accounting area who has maintained high academic standing while having made a contribution to undergraduate accounting activities at McGill.
Estimated value: \$300.

HYMAN HERBERT STEIN AWARD

In memory of the late Hyman Herbert Stein, B.Com. 1925, for a student entering the Second year of the three-year Commerce Program. Ability and financial need will be taken into consideration when making the award.

Value: \$900.

CECIL VINEBERG SCHOLARSHIP

Endowed in 1982 by the associates, friends and family of Mr. Cecil Vineberg to mark his 65th birthday and retirement as senior member of the firm of Ritcher, Usher and Vineberg, Chartered Accountants. It is open to accounting students entering the final year of the B.Com. program who intend to qualify as Chartered Accountants upon graduation. It is awarded at the end of the second year on the basis of excellence in the second year accounting courses and the student's overall academic record.

Value: \$1,200.

GERALD BENJAMIN WASSERMAN MEMORIAL SCHOLARSHIP IN ENTREPRENEURSHIP

Established in 2007 by Robert Wasserman, B.Com 1984, in memory of his father. Gerald B. Wasserman, B.Com. 1958, starting goalie for the McGill Redmen and backup goalie for the Montreal Canadiens, was trained as a Chartered Accountant and became a successful business leader specializing in the turnaround of companies across numerous industries. Awarded by the Desautels Faculty of Management Scholarships Committee on the basis of academic merit to an outstanding student who has completed at least one year in the B.Com. program and is pursuing the Concentration in Entrepreneurship.

Eligibility: students must have successfully completed at least one of the following courses: BUSA 462, BUSA 464 and BUSA 465.

Estimated value: \$3,000.

SHEILA WELLINGTON BMO FINANCIAL GROUP AWARDS

Established by the Bank of Montreal in 1996 for students in the

ELLEN BALLON PIANO SCHOLARSHIP

To be given to a piano student. Provided by gifts made by Miss Ellen Ballon, a graduate of the Conservatorium and by the Julius Block Scholarship Fund and the Cummings Foundation Scholarship Fund.

Estimated value: \$1,500.

SARA BERLIND MEMORIAL SCHOLARSHIP

Established in 1986 by a bequest from Sara Berlind. Awarded to any full-time student in a degree or diploma program in Music.

Value: \$1,000.

FLORENCE MARJORIE BRACE AWARD

Established in 1999 by the estate of Florence Agnes Biltcliffe Brace in loving memory of her daughter, Florence Marjorie Brace. Awarded by the Schulich School of Music Scholarships Committee to an outstanding undergraduate or graduate student in Music.

Estimated value: \$1,000.

BRUNEAU PRIZE

Awarded to a piano student in the Schulich School of Music. In memory of Mr. and Mrs. A.S. Bruneau, the prize is donated by their children.

Estimated value: \$1,000.

HERBERT C. CALEY AWARD

Preference given to students specializing in the performance or history of Baroque and early music. Open to both undergraduate and graduate students. Established by Mrs. Maude Caley in memory of her husband who died December 24, 1980.

Estimated value: \$500.

3.12 School of Nursing

For entrance scholarships for Med-P students, see "Entrance Scholarships and Awards", section 2.

For scholarships and prizes open to undergraduates in all Faculties, see "Open to Students in Most Faculties", section 3.2.

For financial assistance, see "Financial Assistance", section 4.

For details of scholarships, bursaries and prizes in Nursing, see

RICHARD ADAMS AWARD

Established in 1990 by a generous donation from Richard Adams to encourage and promote the study of marine biology. Awarded for high academic standing in marine biology courses to an undergraduate student continuing in the B.Sc. program. Preference will be given to students intending to undertake marine biology courses or research at off-campus field stations. If in any year there is not a suitable candidate at the undergraduate level, consideration will be given to graduate students doing research in marine biology. Awarded by the Faculty of Science Scholarships Committee on the recommendation of the Department of Biology. Value: \$900.

ADVISORY BOARD SCHOLARSHIP IN SCIENCE

Established in 2004 by members of the Faculty of Science Advisory Board for an outstanding undergraduate student who has completed at least one year of a B.Sc. program. Awarded by the Faculty of Science Scholarships on the basis of high academic standing. Value: \$2,000.

E.P. AIKMAN PRIZE IN PHYSICS

Established in 1980 by the family and friends of the late E.P. Aikman. To a student with high academic standing entering the intermediate or final year in Major or Honours Physics. Awarded on the recommendation of the Department of Physics. Value: \$1,200.

MARGARET JANE ALLAN SCHOLARSHIP

Bequeathed in 1929 to the Royal Victoria College by Mrs. Agnes W. Allan. For a woman student showing high academic merit in the initial year of the B.Sc. program. Tenable in the Faculty of Science. Value: \$1,200.

ANACHEMIA PRIZE IN CHEMISTRY

Established by Anachemia Canada Inc. Awarded to an undergraduate student achieving high academic merit in the Research Project courses. Awarded on the recommendation of the Department of Chemistry. Value: \$250.

ALFRED DAVID G. ARTHURS SCHOLARSHIPS IN CHEMISTRY

Established in 2001 through a bequest from Alfred David G. Arthurs for outstanding students having completed at least one year in a degree program in Chemistry. Three or more scholarships to be awarded on the basis of high academic achievement by the Faculty of Science Scholarships Committee on the recommendation of the Department of Chemistry. Value: minimum \$2,000 each.

ASTRAZENECA SCHOLARSHIP IN CHEMISTRY, BIOCHEMISTRY AND BIOLOGY

Established in 2001 by AstraZeneca Canada Inc., a global leader in the pharmaceutical industry. Awarded by the Faculty of Science Scholarships Committee to an outstanding student entering

HAGERMAN PRIZE

Established in 1996 by Joan Hagerman, a long-time McGill employee, to recognize distinguished academic standing by a student who is in and will be continuing in an undergraduate degree program. Awarded by the Faculty of Arts Scholarships Committee in odd-numbered years and by the Faculty of Science Scholarships Committee in even-numbered years.
Value: \$250.

DAVID HARRIGAN MEMORIAL PRIZE

Established in 1980 by his classmates, friends and family in memory of David Harrigan (B.Sc. 1973, M.Sc.A. 1975). Awarded on the recommendation of the Department of Earth and Planetary Sciences to a student with high standing in the Master of Science-Applied course, or to a similarly qualified graduate or undergraduate student with an interest in geochemistry.
Value: \$800.

DR. WILLIAM H. HATCHER PRIZE IN CHEMISTRY

Established by the Department of Chemistry in 1958 and awarded to the student with highest standing in Elementary Organic Chemistry, in which Dr. Hatcher lectured for so many years.
Value: \$150.

HOMESTAKE ACHIEVEMENT AWARD

Established in 1987 by the Homestake Mineral Development Company. Awarded on the basis of academic achievement, leadership and organizational qualities in both academic and extracurricular activities to a second year undergraduate in the Department of Earth and Planetary Sciences. The student should show evidence of a long-term interest in economic or exploration geology. Awarded by the Faculty of Science Scholarships Committee on the recommendation of the Department of Earth and Planetary Sciences.
Value: \$1,000.

JAMES F. MATHISON SCHOLARSHIP

Established in 1993 in honour of James F. Mathison, Ph.D. 1956, by his wife Daisy Mathison in recognition of more than 30 years outstanding service as a faculty member in McGill's Department of Physics. The scholarship is awarded on the basis of distinguished academic standing to a student enrolled in the Honours Physics program. Academic standing is of primary importance. Awarded by the Faculty of Science Scholarships Committee upon the recommendation of the Department of Physics.
Value: minimum \$3,000.

MCGILL ALUMNAE CARRIE DERICK SCHOLARSHIP

Established in honour of the late Professor Carrie M. Derick, B.A. 1890, first woman professor at McGill. Awarded to a distinguished woman student. Tenable in the Faculty of Science.
Value: \$2,000.

MCGILL ALUMNAE OCTAVIA GRACE RITCHIE ENGLAND SCHOLARSHIP

Established in 1979 in memory of the late Octavia Grace Ritchie England, first woman Valedictorian. Awarded a distinguished student with preference to women. Tenable in the Faculty of Science.
Value: \$2,000.

MCGILL ALUMNAE SOCIETY PRIZE

Presented upon graduation to a distinguished student for excellence and high academic standing. Preference given to women students.
Value: \$150.

MAJOR HIRAM MILLS SCHOLARSHIP

E.R. POUNDER PRIZE IN PHYSICS

Established in 1989 by colleagues and friends of Emeritus Professor E.R. Pounder, Fellow of the Royal Society of Canada, in recognition of his distinguished services to the Department. Awarded to a student with high academic standing upon completion of the first year of the Physics program. Awarded by the Faculty of Science Scholarships Committee on the recommendation of the Department of Physics.
Value: \$200.

PRINCE OF WALES SCHOLARSHIP

Two scholarships, open to students proceeding from the penultimate year into the final year. Awarded for general distinction by the Faculty of Science on the student's complete academic record.
Value: \$2,000 each.

CLIFFORD B. PURVES PRIZE IN CHEMISTRY

Established by the McGill Student Chapter of the Chemical Institute of Canada in memory of the late Professor Clifford B. Purves. Awarded on the recommendation of the Department of Chemistry, to the graduating student achieving the highest academic merit in the Chemistry Major Program.
Value: \$1,300.

THE RACEY PRIZE

Established in 2006 by a McGill alumna, B.A. 1951, to recognize and promote outstanding scholarship in the Arts and Sciences by an undergraduate student pursuing a B.A. & Sc. Degree. Awarded by the Faculty of Arts Scholarships Committee and the Faculty of Science Scholarships Committee to an outstanding student with the highest academic standing entering the final year.
Estimated value: \$1,000.

JANE REDPATH EXHIBITION

Two awards founded in 1868 by the la

GARNET AND JANE SHAVER VETERAN'S SCHOLARSHIP

Established in 2003 by Dr. Alan Shaver, former Dean of the Faculty of Science, in honour of his parents, Garnet and Jane Shaver, both of whom were veterans of World War II. Awarded to an outstanding undergraduate student who has completed at least one year of a B.Sc. program on the basis of high academic standing by the Faculty of Science Scholarships Committee.
Estimated value: \$2,000.

RICHARD AND MARY SHAW SCHOLARSHIPS IN SCIENCE

Established in 2007 by Richard A. Shaw, Q.C., B.Sc. 1966, and Mary E. Shaw for outstanding undergraduate students who have completed at least one year of a B.Sc. program. Awarded on the basis of high academic standing by the Faculty of Science Scholarships Committee.
Estimated value: \$2,500 each.

BEA AND MIKE SHERMAN SCHOLARSHIPS

Two awards, established in 2005 by Michael, B.Sc. 1965, and Beatrice Voytanik Sherman, B.A. 1965, to outstanding students who are enrolled in the B.A. & Sc. degree program in the Faculties of Arts and Science. Awarded jointly by the Faculties of Arts and Science Scholarships Committees on the basis of academic excellence.
Value: \$1,000 each.

ANNA AND ROBERT SKOMOROSKI PRIZES IN SCIENCE

Established in 2006 through a bequest by Anna Skomoroski, in memory of Anna Skomoroski and her son, Robert Skomoroski, B.Sc. 1953. Awarded by the Faculty of Science to distinguished graduating students for outstanding academic achievement throughout the B.Sc. program. Recipients of this prize may not hold any other major Faculty of Science or University graduating student award.
Estimated value: \$500 each.

DR. BRIAN C. SMITH PRIZE

Established in 2001 by Karin Hilker in honour of her late husband, along with friends of Dr. Brian C. Smith, M.Sc. 1979. Dr. Smith came to McGill as a post-graduate fellow in the Physics Department, having completed his Ph.D. in theoretical nuclear physics at McMaster University in 1975. He worked as a research associate until he decided to enter McGill's Computer Science program in 1977. Awarded by the Faculty of Science Scholarships Committee to an outstanding undergraduate student who has completed at least one year of study.
Value: minimum \$500.

CLIFFORD C.F. WONG SCHOLARSHIP

Endowed in 1989 by the late Clifford C.F. Wong, B.Arch. 1960, to recognize distinguished academic standing. Awarded by the Faculty of Science Scholarships Committee to a continuing student having completed at least one year in the Bachelor of Science program.
Value: \$1,500.

GARNET A. WOONTON PRIZE IN PHYSICS

Established in 1984 in memory of the late Professor Garnet A. Woonton by friends in the Department of Physics in recognition of his service to the Department and to physics as scientist and teacher. Awarded to a student with high academic standing in the work of the U1 year in the Physics program. Awarded on the recommendation of the Department of Physics.
Value: \$500.

DOROTHY OSBORNE XANTHAKY SCHOLARSHIPS

Two scholarships, bequeathed in 1993 by the late Dorothy Xanthaky. Awarded on the basis of distinguished academic standing to students who have completed at least one year of an undergraduate program in the Faculty of Science. Awarded by the Faculty of Science Scholarships Committee.
Value: \$1,500 each.

DR. DALE ELAINE ZILBERT MEMORIAL PRIZE

Established in 1999 by Ms. Nina Politzer and Dr. Arthur Zilbert, B.Sc. 1970, to honour the memory of their sister, Dr. Dale Elaine Zilbert. Awarded on the basis of academic excellence by the Faculty of Science Scholarships Committee, on the recommendation of the Department of Psychology, to a student who has completed at least one year of study.
Value: minimum \$500.

MEDALS

The following medals are awarded to the graduating students who stand highest in the First Class Honours List of the subjects named, provided the Faculty so recommends to Senate:

LOGAN GOLD MEDAL

Established in 1864 by a donation from Sir W.E. Logan for Geology or Solid Earth Geophysics.

MAJOR HIRAM MILLS MEDALS

Established in 1882 by a bequest from Major Hiram Mills for Biological Sciences. Two medals for award to students graduating with First Class Honours. One medal will be available for students in Biology, Psychology or Microbiology and Immunology and the other for Anatomy, Biochemistry or Physiology. In the event that there is not a suitable candidate in one of the areas in any year, a second medal may be given in the other area.

ANNE MOLSON GOLD MEDAL

Established in 1864 by a donation from Mrs. Molson of Belmont Hall for Mathematics and Natural Philosophy.

HORACE WATSON MEDAL

Established in 1959 by Mr. Jack Watson in memory of his brother for Physics. Awarded to the student graduating with the highest First Class standing in the Honours Physics Course.

standing by the Faculty of Arts Scholarships Committee on the recommendation of the School of Social Work.
Estimated value: \$2,500.

JANE HARRIS-VAN GELDER AWARD

For students or faculty of the McGill School of Social Work to undertake activities (research, service, demonstration project, seminar) in the area of social work and health including mental health. Preference will be given to submissions concerned with the development and advancement of the volunteer and volunteerism in health and mental health care. Applications should be submitted by September 1st to the Director of the School of Social Work that describe the proposed activity in detail, the use to be made of the award monies, and the pertinence of the activity to volunteers and volunteerism in social work and health care. The award winner(s) will be required to submit a report to the Director upon completion of the project and a short precis that may be included in School newsletters and communications.
Value: \$750.

ESTHER KERRY SCHOLARSHIP

Established by a generous bequest from Esther Kerry, an active member of the School of Social Work Alumni Committee for many years. Offered each year to a student, entering the Special B.S.W. program or the second or third year of the regular B.S.W. program, who demonstrates academic excellence. Awarded by the Faculty of Arts Scholarships Committee on the recommendation of the School of Social Work.
Value: \$2,500.

MCGILL ALUMNAE SOCIETY PRIZE

Presented upon graduation to a distinguished student for excellence and high academic standing. Preference given to women students.
Value: \$150.

FREDA L. PALTIEL AWARD FOR IMMIGRANT AND MINORITY WOMEN'S HEALTH AND DEVELOPMENT

For students or faculty of the McGill School of Social Work to undertake a research, service or demonstration project concerned with the health needs of immigrant and visible minority women and their families. Preference will be given to projects undertaken with the involvement of the intended beneficiaries. Applications should be submitted by September 1st to the Director of the School of Social Work, describing the project in detail, the precise use to be made of the Award monies and the utility of the project in promoting the health of the beneficiary populations. The award winner(s) will submit a report to the Director upon completion of the project, indicating its implications for women's health. Presentation or publication of the report will be encouraged.
Value: \$650 biennially.

3.16 School of Social Work**SADIE BATIST ARONOFF MEMORIAL AWARDS**

Two awards, established in 2003 by a bequest from Sadie Batist Aronoff, Dip. Social Work 1930, for outstanding undergraduate students who have completed at least one year in a degree program in Social Work. Awarded on the basis of high academic

the School of Social Work, to a continuing student having completed at least one year in the Bachelor of Social Work program. Value: \$1,500.

3.17 Restricted Funds

McGill University no longer accepts endowments for awards which are restrictive in certain respects, such as race, religion, or sex. However, there are some such funds endowed in the past which are still available.

4.2 Federal and Provincial Loans and Bursaries

A basic qualification is that the applicant must be a Canadian citizen. Certain categories of Permanent Residents may also be eligible. All government loan programs operate exclusively on the basis of financial need.

Students apply directly to their province or territory of residence. Application forms are available from the governmental authorities and the Student Aid

in the UK. Awarded on the basis of demonstrated financial need and academic achievement.

Estimated Value: \$6,000; renewable.

COURTNEY AND ALEXA PRATT MAJOR ENTRANCE BURSARY

Established in 2007 by Courtney Pratt, B.A. 1968 to support undergraduate students in their university studies. Awarded by the Scholarships and Student Aid Office to a full-time student entering any undergraduate degree program in the Faculty of Arts on the basis of demonstrated financial need and academic standing. Maximum Value: \$5,000; renewable.

JOSEPH & IRENE SEGUIN SCHOLARSHIP

Established in 2004 by Henry Sykes (B.A. 1980) in honour of his grandparents and in recognition of their commitment to education and the support they gave him during his time as a student at McGill. Awarded by the Scholarships and Student Aid Office to an outstanding student entering a full-time undergraduate degree program in the Faculty of Arts. While academic standing is of primary importance, a student's financial need will be taken into account. Preference may be given to students doing a major in Economics. Renewable.

WALKER WOOD FOUNDATION BURSARIES

Established in 2007 by the Walker Wood Foundation. Awarded by the Scholarships and Student Aid Office to full-time students entering the Faculty of Science on the basis of financial need and academic standing. Recipients must also have demonstrated involvement in extra-curricular activities. Preference will be given to one student from a rural area of a Maritime province and one student from a rural area of Saskatchewan or Manitoba. Value: \$5,000; renewable.

PATRICIA ANN WELLS MEMORIAL ENTRANCE BURSARY

Established in 2001 by family and friends in memory of Patricia Ann Wells, Dip. (P.T.) 1956, B.Phys.Ther. 1971, M.Sc. 1980, a native of Cape Breton who taught at McGill for over 30 years and who was a passionate supporter of higher education. Awarded by the Scholarships and Student Aid Office to students entering any full-time undergraduate degree program who demonstrate financial need and have good academic standing. Recipients should share Pat's passion for learning and her interest in extra-curricular activities in school and the greater community. Available to students from Cape Breton, Nova Scotia, but may be awarded to students from other parts of Nova Scotia in consultation with the donors.

Estimated value: \$5,000; renewable.

4.4 Bursaries and Scholarships

Some awards listed in this section, although called Scholarships, have a financial need factor and are treated as bursaries.

DR. MAUDE E. SEYMOUR ABBOTT SCHOLARSHIPS

Established in 1938 in honour of the late Maude E. Seymour Abbott, B.A., M.D., F.R.C.P. (Canada), LL.D. (McGill), to commemorate her distinguished work in connection with the history of Canadian medicine, the Sir William Osler Pathological Collection, and her outstanding research in congenital cardiac arrest. Awarded by the Scholarships and Student Aid Office to undergraduate medical students on the basis of academic standing and financial need.

SAMUEL J. ADILMAN BURSARY

Established in 1982 to provide bursary assistance to deserving students in the Faculty of Education.

MERIBAH AIKENS BURSARY

Established in 1992 by Student Services, friends and colleagues on the occasion of the retirement of Mebbie Aikens (B.A. 1979) after many years of loyal service as Coordinator of Off-campus Housing, the Tutorial Service and the Service for Disabled

Students. The fund reflects the respect of many friends who wished to recognize Mebbie's warmth and dedication to students. Awarded on the basis of academic standing and financial need to students in any faculty with a preference to disabled students.

DR. J.H.B. ALLAN SCHOLARSHIPS

Available to undergraduate medical students in any year. Awarded by the Scholarships and Student Aid Office.

MARY A. ALLAN BURSARY FUND

Established in 1984 by a bequest from Maud Allan in memory of her daughter, Mary A. Allan, B.A. 1949. To assist students in any faculty on the basis of financial need.

AMERICAN EXPRESS BURSARY FUND

Established in 1999 by American Express and funded by the corporate card renewal fees of McGill cardholders. Awarded to undergraduate students on the basis of academic achievement and demonstrated financial need.

ANONYMOUS DONATION FOR BURSARIES

Established by an anonymous donor through the Graduates' Society in 1959. Awarded to entering or returning undergraduates with at least Second Class standing whose records show demonstrated qualities of leadership and character.

ARTS AND SCIENCE 1971 INTERNATIONAL BURSARY

Established in 1991 by graduates of the Arts and Science Class of 1971 to express their interest in participating in the world community. The income from the endowment will be used to provide bursaries to international students in undergraduate programs at McGill. Awarded to students with good academic standing and demonstrated financial need, with preference to students from former Warsaw Pact and Third World countries.

BETTY ASSH MEMORIAL BURSARY

Established in memory of a former student in the School of Social Work. Awarded by the Scholarships and Student Aid Office to a Mature student in the B.S.W. program.

JACK AUERBACH MEMORIAL BURSARY

Established in 2001 through a bequest by Jack Auerbach for students in the Faculty of Medicine. Awarded by the Scholarships and Student Aid Office on the basis of financial need.

SHIRLEY AULD BURSARIES

Established in 2007 by Dr. Peter Auld, M.D., C.M. 1952 in memory and in honour of his late wife, Shirley Auld. Awarded by the Scholarships and Student Aid Office to students in the M.D., C.M. program on the basis of financial need.

MARY H. BEATTY SCHOLARSHIPS AND BURSARIES

For students in any faculty or year.

M. HOMER BEDEE BURSARY

Established in 1994 by a bequest from Lillis Bedee in memory of her husband, M. Homer Bedee, B.Sc. (1928). Awarded, on the basis of academic standing and financial need, by the Scholarships and Student Aid Office to Engineering students. Preference will be given to students in Electrical Engineering.

DR. BEN BENJAMIN MEMORIAL BURSARY

Established by his sisters in memory of the late Ben Benjamin, B.A., M.D., C.M., Lecturer in the Department of Pediatrics. Awarded on high academic standing and financial need to medical stu-

JOSEPH ISRAEL BENNETT BURSARY

A bequest from the late Joseph Israel Bennett provides an annual

financial need to students residing in St. Lambert. If no suitable candidates from St. Lambert are found, awards can be made to other deserving students.

CLASS OF LAW 1962 PROFESSOR JOHN W. DURNFORD BURSARY

Established in 1987 by members of the law class of 1962 on the occasion of the 25th anniversary of their graduation from the Faculty. This fund will sustain one or more entrance bursaries awarded to students registering in either the B.C.L. or the LL.B. stream. Awarded to meritorious students who have demonstrated economic need and who, without such support, would be unable to pursue law studies at McGill. They are intended to support needy students who will make a distinctive contribution to the Faculty.

CLASS OF LAW 1964 ENTRANCE AWARDS

Established by members of the Class of 1964 on the occasion of the 25th anniversary of their graduation from the Faculty. Awarded to students entering the First Year of the Faculty of Law's program who have, in the opinion of the Admissions Committee of the Faculty of Law, achieved a distinguished pre-law academic record and who are, in the opinion of the Scholarships and Student Aid Office, in financial need. The scholarships are tenable for up to four years of undergraduate legal studies in the Faculty provided a distinguished academic standing is maintained. Awarded by the Scholarships and Student Aid Office in consultation with the Faculty of Law.
Value: \$800 each.

CLASS OF MEDICINE 1943 BURSARY

Established in 1995 by the Class of Medicine 1943B in honour of their 50th anniversary of graduation. Awarded by the Scholarships and Student Aid Office to a third year medical student in good academic standing who exhibits financial need.

CLASS OF MEDICINE 1954 - DR. C.P. MARTIN IN MEMORIAM SCHOLARSHIP

Established in 1999 by the Class of Medicine of 1954 to celebrate their 45th and 50th anniversary of

FACULTY OF RELIGIOUS STUDIES BURSARY FUND

Established in 1992 by the University to provide assistance to students in the Faculty of Religious Studies. Awards are granted on the basis of academic standing and financial need.

FACULTY OF SCIENCE BURSARY FUND

Established in 1992 by the University to provide assistance to students in the Faculty of Science. Awards are granted on the basis of academic standing and financial need.

ROBERT CRAIG FANNING MEMORIAL BURSARY FUND

Established in 1974 by the parents and friends of Robert Craig Fanning, a student in the Faculty of Science, who suffered a fatal accident following his graduation. Awarded to students in degree programs related to ecological or environmental studies.

HELEN E. FARREN MEMORIAL BURSARY

Established in 1996 through a bequest from Helen E. Farren (B.A. 1935). Awarded by the Scholarships and Student Aid Office to assist students in any faculty or school.

CHANCELLOR JAMES FERRIER MEMORIAL BURSARY

Established by Mrs. Herbert V. Lacey in memory of her great-grandfather, Senator James Ferrier, Chancellor of McGill from 1884 to 1889. Awarded by the Scholarships and Student Aid Office to medical students on the basis of academic standing and financial need, with preference to students from the State of Wyoming.

BOB FINEBERG BURSARY

Established in 1967 by family and friends in memory of the late Bob Fineberg and Barbara Greenspoon to assist a needy and deserving student. Awarded with the approval of the National Council of Jewish Women on the basis of financial need and academic standing.

DR. E.M. FISHER MEMORIAL SCHOLARSHIP

Available to any medical undergraduate student and awarded by the Scholarships and Student Aid Office.

REX FORD PHI KAPPA PI BURSARY

Established in 1990 by the Phi Kappa Pi Montreal Alumni Corporation to provide financial assistance to students in any faculty. Awarded by the Scholarships and Student Aid Office on the basis of academic standing and financial need.

HAROLD G. FOX EDUCATION FUND BURSARIES

Established by donations from the Harold G. Fox Education Fund. To be awarded to needy law students in good standing.

FRIENDS OF MCGILL UNIVERSITY, INC. STUDENT FUND

Established in 1976 to assist U.S. students in any year of an undergraduate degree program. Awarded on the basis of academic standing and financial need. Renewable on merit, amount of award dependent on need from year to year. In the event of an insufficient number of U.S. citizens eligible in any given year, one or more awards may be made to citizens of other countries with the donor's agreement.

FROTHINGHAM BURSARIES

Bequeathed in 1951 by the late Mrs. Harriet F. Miller, to provide bursaries for outstanding women students in any faculty.

H. CARL GOLDENBERG SCHOLARSHIP

A scholarship valued at approximately \$1,850 established in 1997 by Shirley and Edward Goldenberg in memory of her husband and his father, H. Carl Goldenberg, O.C., Q.C., B.A. 1928, M.A. 1929, B.C.L. 1932, Elizabeth Torrance Gold Medal 1932, LL.D. 1966, a distinguished contributor to Canadian public life. Awarded annually to a student in second or third year who has shown particular promise in the field of Canadian constitutional and administrative law and is in financial need. Awarded by the Scholarships and Student Aid Office in consultation with the Faculty of Law.

AARON AND MARY GOODMAN BURSARIES

Established in 1963 to assist deserving students in any faculty.

HELEN GOUGEON MEMORIAL BURSARY

Established by Student Services with the help of friends and family of the late Helen Gougeon, former Associate Dean of Students

by the Scholarships and Student Ai

LEBLANC FAMILY BURSARY

Endowed in 1991 by David, Debra, Duncan and Daniel LeBlanc in honour of their father Norman and the other McGill graduates in the family. Awarded on the basis of academic standing and financial need to students in Management or Engineering.

FELIX LEOPOLD BURSARY

Established in 1953 by Mr. Felix Leopold of Montreal and awarded to needy students in any faculty, who must have a satisfactory academic record and be of good character.

GUSTAV LEVINSCHI SCHOLARSHIP

Endowed in 1986 for needy medical students requiring assistance in the pursuit of their studies. Awarded by the Scholarships and Student Aid Office.

ZAVE LEVINSON MEMORIAL BURSARY

Established in 1976 from the estate of Zave Levinson who died March 5, 1975. To aid deserving students in any faculty or school.

RAE AND JACK LEVY MEMORIAL BURSARY FUND

Established in 1975 from the estate of Mrs. Rae Levy who died June 23, 1974. To aid deserving students in need. Tenable for

JUHAN NOMMIK BURSARY FUND

Established in 1993 by a bequest from Salme Nommik, M.Sc. 1952, Ph.D. 1957, in memory of her brother. Awarded on the basis of financial need and academic standing to students enrolled in the Faculty of Arts.

SALME NOMMIK BURSARY FUND

Established in 1993 by a bequest from Salme Nommik, M.Sc. 1952, Ph.D. 1957. Awarded on the basis of financial need and academic standing to students enrolled in the Faculty of Science.

SYBIL NOONAN BURSARIES FUND

Established by a bequest from Sybil F. Noonan, mother of Beverly Ann Spanier, B.A. 1967, Dip. Ed., 1969, for Canadian students in the third year of undergraduate studies. Awarded by the Scholarships and Student Aid Office on the basis of financial need. Value: maximum \$4,000.

CHARLES ALBERT NUTTING BURSARY

From a donation made in 1930 by Miss Adelaide Nutting, M.A., R.N., in memory of her brother, Charles Albert Nutting, K.C., B.C.L. 1872. Awarded by the Scholarships and Student Aid Office to needy law students in good standing.

JEAN SHARP OGILVIE BURSARY

Established in 1996 by a bequest from Charles D. Ogilvie in memory of his mother. Awarded, on the basis of financial need, by the Scholarships and Student Aid Office to students in any faculty. Preference is given to female students from Gloucester, Ontario, then from the Ottawa/Carleton region of Ontario, and then from Ontario.

WILLIAM OGILVIE BURSARY

Established in 1996 by a bequest from Charles D. Ogilvie in memory of his uncle. Awarded, on the basis of financial need, by the Scholarships and Student Aid Office to undergraduate students in Engineering (including Agricultural Engineering). Preference is given to students from Gloucester, Ontario, then from the Ottawa/Carleton region of Ontario, and then from Ontario.

125TH ANNIVERSARY NATIONAL PROGRAMME BURSARIES

The balance of scholarship monies is used as bursaries to assist meritorious and needy students in the Faculty of Law.

HANS HERMANN OPPENHEIMER SCHOLARSHIP IN INTERNATIONAL LAW

A scholarship valued at approximately \$1,850 founded in 1996 by Tamar Oppenheimer, O.C., LL.D., in memory of her husband. Awarded annually to a student in second or third year who has shown particular promise in the field of public international law and is also in financial need. Awarded by the Scholarships and Student Aid Office in consultation with the Faculty of Law.

PAPANASTASIOU FAMILY BURSARIES

Established in 2003 by Olga Huk Papanastasiou, B.Sc. 1980, M.D.C.M. 1984, and her husband, Vasilios Papanastasiou, M.D.C.M. 1979, M.Sc. 1984. Awarded by the Scholarships and Student Aid Office on the basis of financial need to one or more medical students in the Faculty of Medicine in good academic standing.

SYDNEY S. PAPPELBAUM BURSARY

Established in memory of the late Captain Sydney S. Pappelbaum, B.Com., 1952. Open to students in Commerce who have completed Second year and are entering Third year.

G. RALEIGH PARKIN MEMORIAL BURSARY FUND

Established in 1993 by Jane C. Blackwell, B.A. 1957, in memory of her father, G. Raleigh Parkin. Awarded on the basis of academic standing and financial need to students in the Faculty of Arts, preferably with an interest in Canadian studies.

EDGAR R. PARKINS BURSARY FUND

Established in 1964 by a bequest from Edgar R. Parkins and awarded by the Scholarships and Student Aid Office to students in any degree program requiring financial assistance.

MERLE PEDEN BURSARY

Endowed in 1992 by the Medicine class of 1957 on the occasion of its 35th reunion in appreciation of Merle Peden, B.Com. 1932, who was Secretary of the Faculty of Medicine from 1953 to 1967. Awarded on the basis of financial need to students in the undergraduate medical program.

SAMUEL AND BESSIE PESNER BURSARY

Established in 1967 to honour Mr. and Mrs. Pesner. Awarded by the Scholarships and Student Aid Office with the approval of the National Council of Jewish Women to a student in any faculty or year on the basis of financial need and academic standing.

SAM AND BESSIE PESNER FOUNDATION BURSARY FUND

Established in 1979 by a bequest from Samuel Pesner. To aid students in any faculty needing financial assistance.

MARTHA JANE POULSON MEMORIAL SCHOLARSHIP

Established in 2002 by the Class of Medicine 1980 to honour the memory of Martha Jane Poulson, M.D., C.M.1980. Dr. Poulson exemplified excellence in the practice of both the art and science of Medicine. She also had a remarkable commitment to developing her skills and sensitivities in the arts and humanities. As a concert pianist, singer and leader in her community, she overcame physical adversity with emotional and spiritual strength that awed her friends and colleagues. Awarded on the basis of financial need by the Scholarships and Student Aid Office to medical students in good academic standing. Preference shall be given to students with physical disabilities.

R.E. POWELL BURSARY FUND

Established in 1976 by the family of the late R.E. Powell, Chancellor of McGill from 1957 to 1964, to assist students from outside the Montreal area. Open to undergraduate students in the faculties of Science and Medicine who have satisfactory academic standing and need financial assistance. Preference is given to students from the Saguenay district (Arvida, Chicoutimi, Jonquière, Sacre Coeur, etc.).

GRACE PRESCOTT BURSARY

Established in 1990 by Grace Harriet Prescott to assist students pursuing studies in Nursing. Awarded on the basis of academic standing and financial need.

MR. AND MRS. SAUL RADOWITZ SCHOLARSHIP

Established in 2002 by a bequest from Rosalind Radowitz. Awarded by the Scholarships and Student Aid Office to first year students in the Faculty of Medicine on the basis of financial need.

JAMES B. REDPATH BURSARY

Established in 1992 by Placer Dome Inc. in memory of James B. Redpath, B.Sc. (Eng.) 1931, as a tribute to his accomplished career and the furtherance of the profession of Engineering, Awarded to Engineering students in good standing who exhibit financial need.

HELEN REYNOLDS BURSARY

Awarded in consultation with the Warden of the Royal Victoria College to a woman undergraduate in any degree course who has completed at least one year's study on thi2 0 T0047 1 Tf-13.2T0047 84

B.Com. program on the basis of demonstrated financial need and academic standing. Preference will be given to intercollegiate athletes in any sport.

ROSE GOLT RINZLER BURSARY

Endowed in 1989 by a bequest from Rose Golt Rinzler. Awarded to assist needy students in any faculty.

MURIEL V. ROSCOE BURSARY

Awarded in consultation with the Warden of the Royal Victoria College to a woman undergraduate in any degree course who has completed at least one year's study on this campus. The award is made to a student in financial need who has satisfactory academic standing.

SAMUEL ROSENFELD BURSARY

Established by Ida Rosenfeld Letovsky in memory of her late husband, Samuel Rosenfeld, to support worthy undergraduate medical students. Awarded by the Scholarships and Student Aid Office.

ANN AND GEORGE ROSENGARTEN BURSARY FUND

ANGUS MCCOY SMITH BURSARY FUND

JOHN TROLI JR. BURSARY FUND

Established in 2001 by a gift from John Troli Jr., a McGill parent and university graduate. The income will be used to assist Canadian students entering any undergraduate program with satisfactory academic standing and a demonstrated financial need. Value: minimum \$2,500.

GRANT AND LILLIAN TU BURSARIES

Established in 1998 by Dr. Charles W. Tu (B.Sc. 1971) and his wife Linda, in honour of Dr. Tu's parents, Grant and Lillian Tu, on the occasion of their 70th birthdays. Awarded by the Scholarships and Student Aid Office, on the basis of academic standing and financial need, to students in Science programs with a preference to those in Physics.

UNIVERSITY BURSARY FUND

Established to acknowledge contributions received to support students who need financial help to continue their studies. Awarded on the basis of academic standing and financial need.

UNIVERSITY CHALLENGE BURSARY FUND

Established in 1971 by \$10,000 which was won by a McGill team comprised of Julius H. Grey, B.C.L. 3, William W. Kredentser, B.Sc. 3, Brian M. Shecter, B.A. 4, and Mrs. Faith E. Wallis, B.A. 4, who participated in the CTV Television Program "University Challenge". To provide bursaries to academically deserving students with financial need.

IRVING ORRIN VINCENT BURSARY

Established by Mrs. J.B. Owen in memory of her father, the late Irving Orrin Vincent, B.A. 1907, M.A. 1908, a noted teacher and Principal of Edward VII School in Montreal from 1912 until his death in 1920. Eligibility: Awarded annually by the Scholarships and Student Aid Office on the basis of academic merit and financial need to a graduating student in the Faculty of Arts proceeding towards an M.A., M.Ed., or Doctorate in Classics or Education.

EDWARD VOLCKMAR BURSARY FUND

Established in 1972 by Miss Grace H. Prescott in memory of Edward Volckmar. Awarded to a student in need in the Faculty of Engineering and may be renewed until graduation.

WAINWRIGHT BURSARIES

The balance of scholarship monies is used as bursaries to assist meritorious and needy students in the Faculty of Law.

DR. & MRS. LEONARD G. WASILESKI BURSARIES

Established in 2006 by John Wasileski, B.A. 1975, to honour his parents who encouraged and supported him throughout his education. Awarded by the Scholarships and Student Aid Office to full-time undergraduate student(s) in the Faculty of Arts on the basis of financial need.

GORDON WEBBER BURSARIES

Established in 1966 by a bequest of the late Professor Gordon Webber and donations from his former students, for needy students in the School of Architecture.

MARY AND STUART WEBSTER BURSARY FUND

Established in 2001 through a generous gift from Mary G. Webster, B.A. 1938. The annual income will be used to assist Canadian students entering Medicine or related health sciences programs who have demonstrated financial need. Preference will be given to deserving women students. Value: minimum \$5,000; renewable subject to satisfactory standing.

RICHARD LAURENCE WELDON SCHOLARSHIPS

Established in 2003 by a bequest from Elspeth Anne Weldon in memory of her late father, Richard Laurence Weldon, for students in the Department of Mechanical Engineering. Awarded by the Scholarships and Student Aid Office on the basis of financial need.

WILLIAMS-WAIT BURSARY

Established in 1980 by a bequest from Eric W. Wait for a student from Ottawa or the surrounding neighbourhood who is in the Faculty of Science. Awarded on the basis of financial need and high academic standing.

EDGAR AND MARGARET WILSON BURSARY FUND

Established in 1956 by a bequest from Edgar Moles Wilson and awarded by the Student Aid Office to students in any degree program requiring financial assistance.

MORRIS W. WILSON MEMORIAL BURSARY FUND

Established in 1946 by contributions from a large number of friends and associates of the former Chancellor. To assist undergraduate students who have satisfactory academic standing and need financial assistance.

GEORGE WIOR FOUNDATION BURSARIES

Three bursaries in the amount of \$2,500 each, awarded annually to students in financial need with good academic standing. One bursary to a student in each of second, third and fourth year of the MDCM Program. The bursary is renewable only if academic standing is maintained.

CHARLES S.C. WISDOM BURSARY

Established in 1956 by the late Mrs. Stuart Albert Wisdom in memory of her late son, Charles S.C. Wisdom, a graduate of the Royal Military College, Kingston, and of the McGill School of Commerce. Awarded in consultation with the Dean of the Faculty of Management to a deserving student in the last two years of the B.Com. program.

WOLCOTT BURSARY FUND

Bequeathed in 1974 by the late Mrs. Anna D'Aeth (née Wolcott) to provide a scholarship or bursary for some needy student born in the West Indies.

WOMEN ASSOCIATES AGNES C. TURNER BURSARY FUND

Established in 1985 by a donation to the Women Associates of McGill from Dr. J. Gilbert Turner in memory of his wife, a former president and long time member of the Women Associates. Awarded to students in any faculty on the basis of scholarship and need in order to assist them in the pursuit of their studies.

WOMEN ASSOCIATES OF MCGILL BURSARIES

Available to students in any faculty on the basis of scholarship and need. Winners are chosen by the Scholarships and Student Aid Office and selected from the applicants for University bursaries.

ISABEL CLARKE DICKSON WOODROW SCHOLARSHIPS

Established in 2000 by a generous bequest from Isabel Clarke Dickson Woodrow for Canadian students entering an undergraduate Nursing program. While academic standing is of primary importance, account may also be taken of financial need and/or qualities of leadership in community and school activities. Awarded by the University Committee on Scholarships and Student Aid and renewable provided the holder maintains an academic standing satisfactory to the Committee. Any unspent funds may be awarded by the Scholarships and Student Aid Office as bursaries to Canadian undergraduate students in Nursing. Value: minimum \$2,000 each.

WORK STUDY FUND

To provide work opportunities for financially needy students by providing subsidies to the departments who employ students through the Work Study Program. Apply to the Scholarships and Student Aid Office.

MARY WASSERMAN ZELNICKER BURSARY

Established in 2006 by Dora Ullian in honour of her mother Mary Wasserman Zelnicker, B.A. 1992. Awarded by the Scholarships and Student Aid Office to First Nations, Métis, and Inuit students in any full-time, undergraduate or graduate degree program, on the basis of financial need.

4.5 Loan Funds**W.R. AIRD LOAN FUND**

Established in 1952 for students in the Faculty of Dentistry.

ALMA MATER BURSARY AND LOAN FUND

Established in 1982 by generous contributions to the Alma Mater Fund from many graduates who designated their gifts to the area of scholarships and student aid. Awarded on the basis of academic standing and financial need to students in any faculty.

BERLINER LOAN FUND

Established by the late Edgar M. Berliner to provide bursaries and loans for students in Sociology and Social Work.

BORIGHT LOAN FUND

Established in 1963 by a bequest from the late George H. Boright to provide loans to deserving medical students.

BURNSIDE STUDENT LOAN FUND

Established to assist needy students in all faculties.

DAVID M. CALDWELL STUDENT LOAN FUND

Established in 1973 by a bequest from the late David M. Caldwell, M.D. 1919, to assist students in the Faculty of Medicine, with preference to American students.

CANADIAN CLUB OF MONTREAL FIFTIETH ANNIVERSARY STUDENT AID FUND

Established in November 1955 to commemorate the Club's Fiftieth Anniversary. The purpose is to foster patriotism by encouraging the study of the institutions, arts, literature, and resources of Canada, and the appreciation of matters of interest and concern to Canadians.

CANADIAN INSTITUTE OF MINING AND METALLURGY MONTREAL BRANCH LOAN FUND

Established in 1958 by the Montreal Branch of the Institute to provide loans to undergraduate or graduate students in Geological Sciences, Metallurgical Engineering and Mining Engineering.

CLEMENT C. CLAY MEMORIAL LOAN FUND

Established in 1985 by a bequest from Clement C. Clay, M.D. (1932) to provide loan assistance for students born in the United States who are registered in the Faculty of Medicine.

BERTHA COHEN REVOLVING LOAN FUND

Established to provide small, short-term loans to aid students in emergencies in any faculty.

COLLEGE OF DENTAL SURGEONS OF QUEBEC LOAN

Established in 1958 by the College of Dental Surgeons of Quebec to aid students in the second and upper years in the Faculty of Dentistry. Loans shall not exceed the tuition fees for the year.

COMMERCIAL SOCIETY LOAN FUND

To aid students who are entering their Final year in the B.Com. program to complete their course. Loans are repayable within two years after graduation.

LOUIS DE ZWIREK, Q.C. LOAN FUND

Established in 1969 by his widow in honour of her late husband from the estate to aid students in the Faculty of Law. Awarded by the Scholarships and Student Aid Office.

ALEC AND SYLVIA DOLLIN LOAN FUND

Established in 1965 by Mr. Alec Dollin to provide loans for medical students.

FACULTY OF MANAGEMENT LOAN FUND

Awarded by the Scholarships and Student Aid Office for students in the Faculty of Management who need financial assistance.

J.M. FAIRBAIRN LOAN FUND

Bequeathed in 1967 by the late Mrs. J.M. Fairbairn for loans for students in the Faculty of Engineering.

A. FLEMING LOAN FUND

Established in 1954 by Mr. A. Fleming to aid students in the Faculty of Law. Awarded by the Scholarships and Student Aid Office.

AMY AND SHARAI FREEDMAN MEMORIAL LOAN FUND

Established in 1968 by the parents and friends of the late Amy Freedman for the purpose of making emergency loans to needy students (already in course at McGill) in any faculty.

GEORGE HENRY FROST FUND

Founded by the late G.H. Frost, B.Sc. 1960, to aid students in the Faculty of Engineering who require financial assistance. The applicants' academic standing is considered.

GREEK STUDENTS BURSARY AND LOAN FUND

Established in 1952 by a group of Greek merchants and a subsequent bequest in 1997 by George and Maria Karatzopoulos to assist Greek students attending McGill.

EDWARD HENRY HAMILTON LOAN FUND

Established in 2002 by Elizabeth Hamilton in accordance with the expressed wish of her husband, the late Robert M.P. Hamilton, B.Sc. 1925 (Engineering), in honour of his father Edward Henry Hamilton, B.A.Sc. 1884 (Engineering). Awarded on the basis of financial need by the Scholarships and Student Aid Office to students in the Faculty of Engineering

CONRAD F. HARRINGTON STUDENT LOAN FUND

Established in 1983 by the Friends of McGill, Inc. in honour of Conrad F. Harrington's years of service as Chancellor of McGill University. Awarded to students from the United States on the basis of academic standing and financial need. In the event of an insufficient number of United States citizens eligible in any given year, one or more awards may be made to citizens of other countries with the donor's agreement.

HERSCHORN LOAN FUND

Established by the late Mr. H.E. Herschorn for the purpose of making loans to students in any faculty who would otherwise be unable to continue their studies.

DUNCAN HYDE MEMORIAL LOAN FUND

Established in 1985 by a bequest from Annie Alfretta Hyde in memory of her brother to provide loans to assist needy students pursuing d5 Tc8 hi3 bequest from Annie Alfretta Hyde in

BERTRAM KIDD AND MARJORIE SHARP MEMORIAL LOAN FUND

Established in 1968 by parents and friends in memory of Bertram Kidd and Marjorie Sharp and is available to any McGill student.

KIWANIS CLUB OF MONTREAL STUDENT LOAN FUND

Established to assist worthy Agriculture students who are in need of financial help to further their education. Except in special cases the maximum loan is \$500.

LACEY LOAN FUND

Established in 1962 by a donation from Mrs. Herbert Van Devanter Lacey of Cheyenne, Wyoming, primarily to aid medical students from the State of Wyoming. It may however be extended to others in accordance with the following priorities: dental students from Wyoming; medical students from other states of the U.S.A.; medical students from other countries. Loans are not to exceed \$700 per year.

BERNARD LEVITON LOAN FUND

Established by Mr. Sidney Ender in memory of the late Bernard Leviton for students in the Faculty of Engineering with preference given to students in Electrical Engineering.

J.B. LYNCH LOAN AND BURSARY FUND

Established by Mr. J.B. Lynch, President of Siscoe Mines Limited, for loans or in some cases outright grants to needy students.

JOHN HAROLD MACLAREN STUDENT LOAN FUND

Established in 1965 by a bequest from John Harold MacLaren.

DR. DOUGLAS W. MACMILLAN LOAN FUND

Established by a gift from Dr. MacMillan to assist needy students in any faculty.

MARTLET FOUNDATION LOAN FUND

Established in 1954 by the Martlet Foundation for students with good academic standing and athletic ability who are in need of financial assistance.

WALTER MATHESON LOAN FUND

Established in 1985 by a bequest from Walter Matheson, B.Sc. 1913, to provide loan assistance to needy students in any faculty.

JUDITH MCCONNELL MEMORIAL LOAN FUND

Established to assist students in the School of Social Work to pursue their studies. Awarded by the Scholarships and Student Aid Office, with preference given to students from St. Lambert or the South Shore area.

MCGILL ALUMNAE SOCIETY LOAN FUND

Established in 1983 to aid students in any faculty who have good academic standing and require financial assistance. Preference given to women students.

MCGILL ASSOCIATES 50TH ANNIVERSARY LOAN FUND

Established in 1988 through the generous support of members of the McGill Associates during the McGill Advancement Program, 1983 to 1986. To provide loans to deserving undergraduate students who have successfully completed at least one year at McGill.

MCGILL IRANIAN STUDENTS' ASSOCIATION LOAN FUND

Established in 1984 by the McGill Iranian Students' Association to assist students who have satisfactory academic standing and need financial assistance. Preference is given to students from Iran who are in their final year of study.

MCGILL SOCIETY OF ONTARIO LOAN FUND

Established in 1938 by the Ontario Branch of the Graduates' Society of McGill.

ISABELLA MCLENNAN BURSARY AND LOAN FUND

A rotating fund for students in Architecture to assist in financial emergencies.

GEORGE W. MERCK MEMORIAL LOAN FUND

Established in 1960 by the Merck Company Foundation to provide loans for undergraduate medical students, interns and residents.

MRS. M. DOROTHEA MILLAR LOAN FUND

Established in 1956 to assist students, graduate or undergraduate, to pursue studies or research at McGill.

HARTLAND MOLSON LOAN FUND

Established in 2003 from income on a bequest from the late Senator Hartland de M. Molson, L.L.D. 1983, a distinguished member of the McGill Associates. Awarded by the Scholarships and Student Aid Office on the basis of financial need, from the fund monitored by the McGill Associates.

DEAN MOWRY MEMORIAL LOAN FUND

Established in 1961 in memory of the former Dean of Dentistry by the Dental Student Society of McGill University. Available to dentistry students who are in good standing and have financial need.

GERTRUDE MUDGE MEMORIAL STUDENT AID FUND

Established in 1958 by donations from students, graduates, and staff in memory of the late Gertrude Mudge, from many years Assistant Secretary of the Faculty of Medicine. Available to medical students. Loans shall not exceed the fees for the year.

NATIONAL COUNCIL OF JEWISH WOMEN LOAN FUND

Established for the purpose of aiding students in the Faculty of Education to complete their courses.

125TH ANNIVERSARY STUDENT LOAN FUND

Established in 1979 through the generosity of graduates of the Faculty of Law on the 125th anniversary of the Faculty. Awarded by the Scholarships and Student Aid Office to students in the Faculty of Law who, during the course of the academic year are in serious need of emergency financial assistance and who are unable to obtain financial assistance from any other source.

J.K. PRATT MEMORIAL LOAN FUND

Established in 1952 in memory of the late Janetta K. Pratt who

Established by Mr. J.B. 0-15.037 8rchitectnt-

ROBERT DUBEAU STUDENT ATHLETE AWARD

Established in 2005 by friends and colleagues of Robert Dubeau with matching funds from the University, the Martlet Foundation

PERCIVAL MOLSON TRACK AND FIELD AWARDS

Established in 2006 by The Molson Foundation to honour the memory of one of McGill's and Canada's outstanding athletes, Percival Molson, a decorated World War I hero and a former Governor of the University. Awarded by the McGill Athletics Board Awards Committee to promote and facilitate the athletic achievements of student athletes who are entering any undergraduate degree program and qualify to be members of the men's or women's McGill Track and Field teams.

Estimated value: minimum \$1,500 each; renewable.

TOM MOONEY FOOTBALL AWARDS

Established in 2007 by the members of the 1969 Redmen Championship Football Team ("The Mooney Men") in honour of Tom Mooney, coach of the Redmen football team from 1964 to 1969. Awarded by the McGill Athletics Board Awards Committee to student-athletes who are entering any undergraduate degree program and who qualify to be members of the Redmen football team.

Estimated value: at least \$1,000 each; renewable.

MIKE RICHARDS HOCKEY AWARDS

Established in 2005 through generous donations from Michael L. Richards, B.A. 1960, B.C.L. 1963. Awarded by the McGill Athletics Board Awards Committee to eligible student athletes who qualify to be members of the McGill Intercollegiate Hockey Team. Value: minimum \$2,000 each; renewable.

ROGERS FAMILY STUDENT ATHLETIC AWARDS

Established by the Rogers Family whose members have earned ten degrees at McGill from 1904 to 1993 and have represented McGill on the Football, Boxing, Wrestling and Skiing Teams. Available to entering undergraduate students who are Canadian citizens, awarded on the basis of academic standing and qualification as candidates for the McGill intercollegiate football team. Awarded by the McGill Athletics Board Awards Committee and renewable provided the holder maintains an academic standing satisfactory to the Committee.

Estimated value: \$1,500 each.

GAVIN ROSS HOCKEY AWARD

Established in 1997 in honour of Gavin Ross, former Executive Director of the McGill Alumni Association upon his retirement, by friends and colleagues. To provide encouragement to student athletes who are members of, or candidates for, the Men's Intercollegiate Hockey Team. Awarded by the McGill Athletics Board Awards Committee.

DOROTHY A. NICHOL SCHOLARSHIPS

Established in 2000 through a generous gift from Dorothy A. Nichol, B.Sc.(P.E.) 1949, who was a student leader, women's basketball coach 1949-52, Professor in the Faculty of Education 1952-1989, and Director of Women's Athletics at Macdonald College 1955-1970. The scholarship is in recognition of her lifelong commitment to and encouragement of women's athletics in Canada. Awarded by a Selection Committee of the University Committee on Scholarships and Student Aid on the basis of academic achievement and contributions to extra-curricular activities in athletics. Full-time students in any year of an undergraduate degree program are eligible to apply provided they are returning to McGill as full-time degree students. Preference will be given to women students in Education who are members of intercollegiate teams. In the event that there are no candidates in Education, then preference will be given to women students in any undergraduate degree program who are members of intercollegiate teams. Value: minimum \$2,000 each.

Alumni Football Awards 73
 Alumni Hockey Awards 73
 Alumni Martlet Basketball Awards 73

7 External Awards

External awards are awards which are administered by associations or organizations outside of McGill. Information about external awards is located in a variety of places at McGill such as individual academic departments and the Office of the Dean of Students. The Career and Placement Service (CAPS) maintains binders listing a large number of external awards and has numerous directories which students can consult. Information is available at the office located at 3600 McTavish Street or at www.caps.mcgill.ca/tools/externalscholarships.php.

8 Index of Awards

1938 Champions Awards 75
 1968 Oval Award 11
 75th Anniversary Scholarship 33

A

Abbott (Maude) Scholarships 56
 Abou-Fayssal (Habib) Prize 29
 Academy of Athens Prize 17
 Accenture Prize 37
 Accenture Prize in Engineering 29
 Accenture Prize in Science 46
 ACDEG Scholarship in Chemical Engineering 29
 Adair Family Athletic Awards 73
 Adams (Richard) Award 47
 Adilman (Mona Elaine) Prize 17
 Adilman (Samuel) Bursary 56
 Advisory Board Scholarship 47
 Affleck (Ray) Prize 29
 Agribrands Purina Canada Inc. Scholarship 12
 Aikens (Meribah) Bursary 56
 Aikman (E.P.) Prize 47
 Aird (W.R.) Loan Fund 69
 Alexander (Charles) Scholarship 17
 Allan (Margaret Jane) Scholarships 17, 47
 Allan (Mary A.) Bursary 56
 Allan Scholarships (J.H.B.) 56
 Alma Mater Bursary and Loan Fund 69
 Alma Mater Scholarships 5
 Altshuler (John and Barbara) Entrance Bursaries in Medicine 55
 Alumnae Society Bursaries 54
 Alumnae Society Scholarships 54
 Alumni Basketball Awards 73
 Alumni Bursaries, Macdonald Campus 12

Birks Silver Medal	36
Blackwood Convocation Prize	12
Blanchard (Robert) Bursary	57
Bland (John) Scholarship	29
Blidner (Sydney) Scholarship	57
Blumer (Jack) Prize in Science	47
BMO Financial Group Awards	40, 73
Board of Governors Entrance Bursary	57
Bodensieck (Frieda and Carl) Bursary	57
Bogert (Frank and Helen) Scholarships	6
Bogert (Frank and Helen) Student Aid Fund	57
Bombardier-Canadair Scholarship	29
Bonato (Paula) Prize	18
Boright Loan Fund	69
Botterell (Edmund Henry) Bursary	57
Boyer (Arthur and Noella) Bursary	57
Brace (Florence Marjorie) Award	41
Brennen (Herbert) Scholarships	47
British Association Medals	36
Brittain (Isabel) Bursary	54
Brock (Abe and Jennie) Award	29
Brock (Hugh) Scholarships	6
Brockwell (C.A. Brodie) Prize	18
Brodie (Maurice) Scholarship	57
Brooks (Murray) Bursaries	57
Brown (Ernest) Gold Medal	36
Bruce (Rev. G.O.) Bursaries	57
Bruce (Robert) Bursaries	57
Bruce (Robert) Scholarships	18, 29, 37, 47
Bruneau Prize	41
Bryden (Dawn Eileen) Bursaries	57
Buchanan (Gwen) Scholarship	8
Burke (Kenneth M.) Bursaries	57
Burnside Student Loan Fund	69
Butler (Zella Bronfman) Bursary	57
C	
CAE Scholarship	29
Caie (Penny) Scholarship	57
Caldwell (David M.) Loan Fund	69
Caley (Herbert) Award	41
CAMBIOR	30
Cambior-Louis Gignac Scholarship	30
Cameron (Duncan) Prize	47
Cameron (Virginia) Bursary	54
Campbell (Duncan) Award	41
Campbell (Samuel) Bursary	57
Canadian Agricultural Economics Society Book Prize	12
Canadian Army University Course Bursary	57
Canadian Club of Montreal Fiftieth Anniversary Fund	69
Canadian Information Processing Society Prize	47
Canadian Institute of Mining and Metallurgy Loan Fund	69
Canadian Society for Chemistry Silver Medals	47
Canadian Society of Animal Science Prize	12
Carl (Kurt) Award	47
Carr-Harris (Lloyh647	

UNDERGRADUATE SCHOLARSHIPS AND AWARDS

Deehy (Patrick) Bursary	59
Del Bosco (Loretta) Scholarships	48
Della Pergola Scholarships	41
Delta Kappa Gamma Award	27
Department of Performance Scholarship	41
Department of Theory Scholarship	41

UNDERGRADUATE SCHOLARSHIPS AND AWARDS

Penhallow Prize	50
Penhallow Scholarship	50
Performance Scholarship	45
Pesner (Sam and Bessie) Foundation Bursary Fund	65
Pesner (Samuel and Bessie) Bursary	65
Peters (Charlie) Scholarship	23
Peters (Eileen) Scholarships	9
Peterson Prize in English	23
Peterson Scholarships in Classics	23
Peterson Scholarships in Music	43
Petras (George and Lidia) Scholarships	50
Petrie & Ker Scholarship	62
Petro-Canada Leaders Awards Program	9
Phi Delta Kappa Prize	28
Phi Kappa Pi Bursary	60

Schwartzman (Jacob) Scholarship	66
Science Class of 1965 Scholarship	51
Scott (Barbara) Scholarship	24
Sebestyen (Peter) Award	35
Segall (Harold N.) Loan Fund	70
Seguin (Joseph & Irene) Scholarship	56
Semaan (J. Jeffery) Prize	24
Separator Engineering Bursary	35
Seybold (H. Laurie) Bursary Fund	66
Shakespeare Medal	26
Shakespeare Scholarship	24
Shapiro (Bernard) Prize	44
Shapiro (Bernard) Scholarships	51
Shapiro (Lionel) Awards for Creative Writing	24
Shapiro (Lionel) Awards in English	24
Shapiro (Phyllis and Bernard) Scholarship in Instrumental Performance	44
Shapiro (Phyllis and Bernard) Scholarship in Opera	44
Shapiro (Phyllis) Teaching Awards	28
Sharp (Marjorie) and Bertram Kidd Loan Fund	70
Sharwood (Robert) Scholarship	66
Shaver (Alan) Scholarships	51
Shaver (Garnet and Jane) Scholarship	52
Shaver (Wilfred) Scholarships	35
Shaw (Catherine M.) Early Drama Award	24
Shaw (Catherine M.) Shakespeare Award	24
Shaw (Richard and Mary) Scholarships	52
Shayne Family Scholarships	66
Shell Canada Engineering Scholarships	35
Sherman (Bea and Mike) Scholarships	25, 52
Siblin (Herbert E.) Award	39
Skomoroski (Anna and Robert) Prizes in Science	52
Slapcoff (Laurie Robin) Award	45
Slatkin (Regina) Award	25
Smail (Stanton) Bursary	66
Smith (Adam) Economics Scholarship	25
Smith (Angus McCoy) Bursary Fund	67
Smith (Brian) Prize	52
Smith (Gordon) Scholarship	35
Smith (Greville) Scholarships	10
Smith (Seba Abbott) Scholarship	10
Smythe (Thomas and Willa) Bursary	67
Snell (Dorothy Esmé Graham) Bursary	67
Snell (Dorothy) Scholarship	39
Snow (Charles and Frances) Bursary	67
Snyder (Charles William) Scholarships	25
Social Work Alumni Loan Fund	70
Social Work Bursary Fund	67
Société de Musique Canadienne Prix	43
Society of Chemical Industry Awards	35, 52
Solod (Zoya) Scholarship	45
Solomon (David) Prizes	25
Southam (F.N.) Loan Fund	70
Spanier (Albert) Prize	25
Spanier (Calder) Prize	45
Spanish Embassy Prize	25
Spinelli (E. Noel) Prize In Music	45
Spirit of the Warrior Queen Athletic Award	75
SSMU Access Bursary	67
St. Andrew's Society Bursary	67
St. Francis District pStO1.2()t. Francis De . . (E .65.5(.)1.3(.)-7.4(.)-7.5(.)-7.5(.)-6.2(..)-7.5(.)-6.5(.)-6.4(6org4(.)-7.4t)JT#.0 6(bert) Prize) . . F.N5.	

UNDERGRADUATE SCHOLARSHIPS AND AWARDS

Watson (Horace) Prize	52
Webber (Gordon) Bursaries	68
Webster (Mary and Stuart) Bursary	68
Weinroth (Howard) Prize	26
Weir (Joan C.) Scholarship	35
Weir (William Arthur) Award	45
Weldon (Hazel) Scholarship	26
Weldon (Richard Laurence) Scholarships	35, 68
Wellington (Sheila) Awards	40, 73
Wells (Patricia Ann) Memorial Entrance Bursary	56
Wheeler (Gerald) Award	45
Whitby (G. Stafford) Prize	52
White (F.T.M.) Award	35
White (Morton J.) Loan Fund	71
Wickenden Loan Fund	71
Wight (Allan and Dorothy) Loan Fund	71
Willey (Constance) Prize	45
William Rowles Bursary	17
Williams (Gwyn) Loan Fund	71
Williams (W.M.) Scholarship	35
Williams-Wait Bursary	68
Wilson (Edgar and Margaret) Bursary Fund	68
Wilson (Edgar and Margaret) Scholarships	10
Wilson (Morris W.) Bursary Fund	68
Wilson (Morris W.) Scholarships	10
Wilson (Robert W.) Scholarships in Science	52
Wilson (Stuart A.) Prize	36
Winters (George) Bursary	63
Wior (George) Foundation Bursaries	68
Wirth (E.M.) Scholarship	45
Wirth (Elizabeth) Scholarship	45
Wisdom (Charles S.C.) Bursary	68
Wisdom (Stuart Albert) Scholarship	36
Wise (Peter S.) Prize in Accounting	40
Wiseman (Shloime) Prize	26
Wolcott Bursary Fund	68
Wolfson (David) Scholarships	10
Women Associates of McGill Bursaries	68
Women Associates of McGill Scholarships	10, 26, 36, 40, 45, 52, 53
Women Associates-Weldon Scholarship	26
Wong (Clifford) Loan Fund	71
Wong (Clifford) Scholarships	26, 28, 36, 40, 53
Wood (Edward C.) Scholarships	10
Wood (Valerie) Award in Music	45
Woodhead Prize	26
Woodrow (Isabel) Scholarships	10, 68
Woodyatt (J.B.) Scholarships	36
Woonton (Garnet) Prize	53
Work Study Fund	68
Wright (James G.) Scholarship	10
X	
Xanthaky (Dorothy) Scholarships	53
Y	
Yaffe (Betty Workman) Prize	26
Yara Canada Prize	17
Yaralli (Roy) Award	36
Yeganegi (Shiriin) Scholarship	40, 73
Yip (Gar Lam) Prize	36
Y.M.C.A. Scholarship Fund	62
Yugoslavia, Prize of the Ambassador in Canada	26
Z	
Zanger (Maurice) Bursary	68
Zelnicker (Mary Wasserman) Bursary	69
Zilbert (Dale) Prize	53
Zimble (Deirdre) Prize	28, 72
Zukerman (Earl) Hockey Awards	75

